

NORSEAL

SPECIALIST SEAL SOLUTIONS



NORSEAL

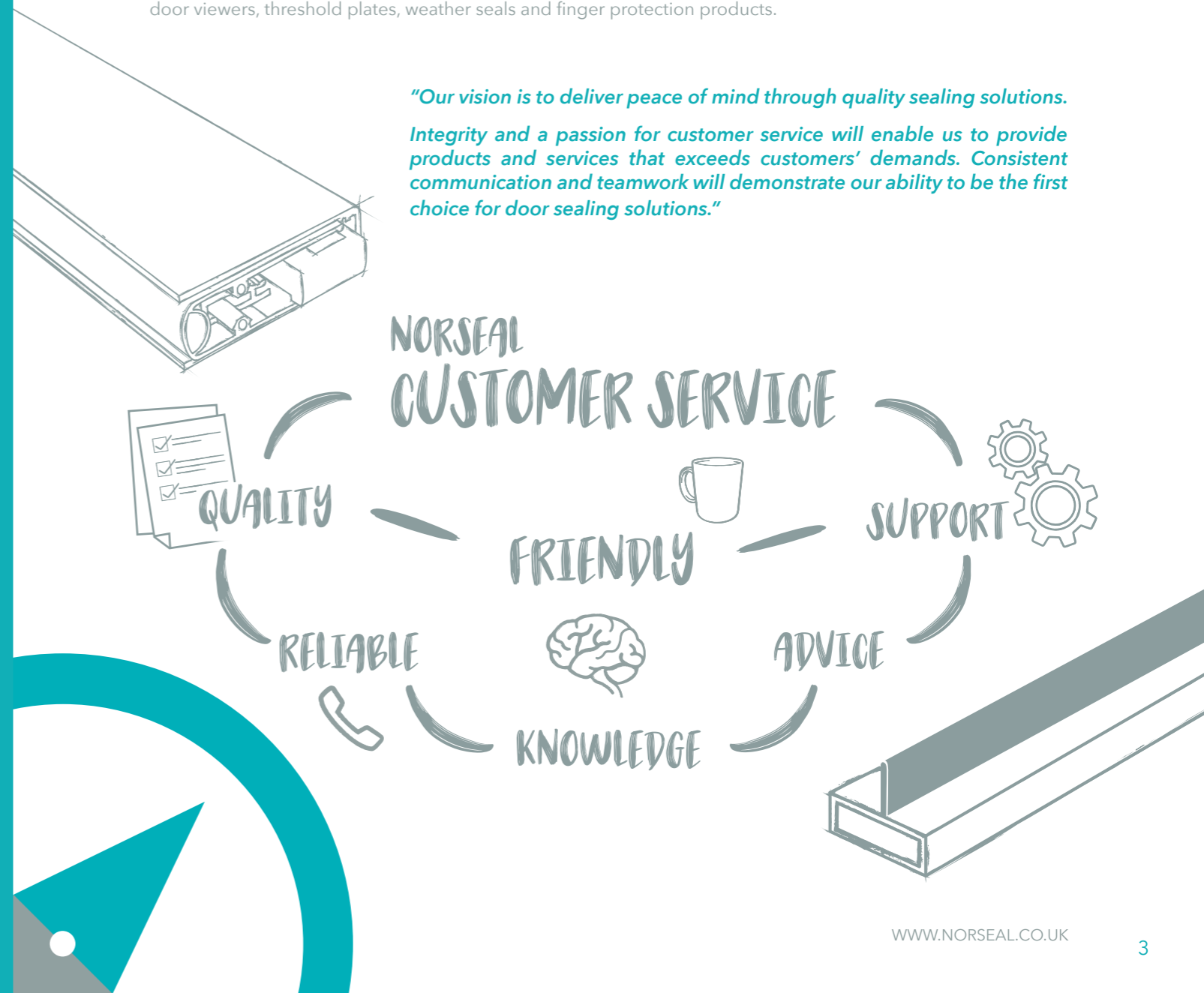
Norseal are proud to be the UK's largest stockist of specialist seal solutions. Committed to the design, development and distribution of intumescent and acoustic products, ensuring they both meet and exceed the very latest industry standards.

Offering a friendly and professional service, the team pride themselves on providing a next day delivery service regardless of order size, up-to-date technical advice and a commitment to excellence. This level of service is continued online at, norseal.co.uk.

As well as door seals, Norseal also stock a wide range of ancillary door products including; fire rated glazing, electrical and plumbing solutions, fire rated ventilation, letterplates, door viewers, threshold plates, weather seals and finger protection products.

"Our vision is to deliver peace of mind through quality sealing solutions.

Integrity and a passion for customer service will enable us to provide products and services that exceeds customers' demands. Consistent communication and teamwork will demonstrate our ability to be the first choice for door sealing solutions."



The Guild of Architectural Ironmongers (GAI) is the only trade body in the UK that represents the interests of the whole architectural ironmongery industry - architectural ironmongers, wholesalers and manufacturers. Its reputation is built on three key areas: education, technical support and community. Its qualification, education and CPD programmes are widely respected in the UK and overseas, including GCC and Hong Kong. The technical information service is the only specialist service of its kind for the industry, providing GAI members with comprehensive advice on issues relating to legislation, regulations and standards governing the use of architectural ironmongery and related hardware.



ASDMA was formed in 1990 with membership made up of companies who manufacture specialist bespoke timber doors. Many of these had been founder members of the TRADA QA Scheme for fire doors.

Since the association was founded, the membership has grown to include suppliers of hardware, seals, glazing and also leading UKAS-accredited test houses. The diversity of membership means the association is uniquely equipped to pull together information on all factors relating to the bespoke timber door industry.



FDIS is Europe's first fire door inspection scheme. It was launched in 2012 and is a joint venture delivered by the British Woodworking Federation (BWF) and the Guild of Architectural Ironmongers (GAI). It aims to transform people's knowledge about how and why fire doors work, and the potential dangers of getting it wrong.



RIBA Product Selector is the industry-leading and definitive online resource to research and select construction product and service information for all types of building design projects.

The website offers free access to manufacturers' product catalogues, technical documents, design files, case studies and company contact details. It also contains product listings by CI/SfB classifications to assist with company and/or product selection.



ISO 9001 is the internationally recognised standard for Quality Management Systems (QMS). It is the most widely used QMS standard in the world, with over 1.1 million certificates issued to organizations in 178 countries.

ISO 9001 provides a framework and set of principles that ensure a common-sense approach to the management of your organisation to consistently satisfy customers and other stakeholders. In simple terms, ISO 9001 certification provides the basis for effective processes and effective people to deliver an effective product or service time after time.

CONTENTS



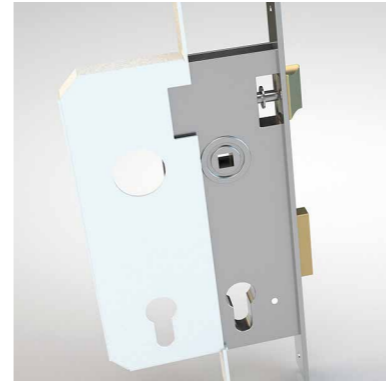
1. INTUMESCENT SEALS
PAGES 4-17



2. GLAZING SEALS
PAGES 18-33



3. GRILLES AND COVERS
PAGES 34-37



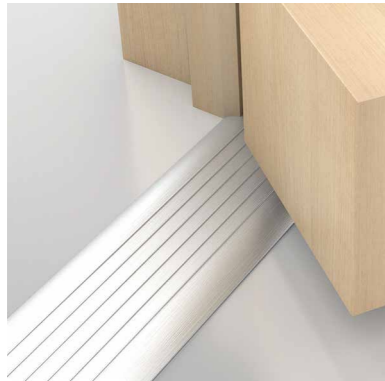
4. IRONMONGERY PROTECTION
PAGES 38-41



5. DOOR HARDWARE
PAGES 42-49



6. ACOUSTIC SEALS
PAGES 50-69



7. THRESHOLD PLATES
PAGES 70-73



8. SLIDING DOOR SEALS
PAGES 74-79



9. GLASS DOOR SEALS
PAGES 80-91



10. WEATHER SEALS
PAGES 92-103



11. FINGER PROTECTION
PAGES 104-111

INDEX & GLOSSARY
PAGES 112-116

1. INTUMESCENT SEALS

An extensive range of intumescent strips providing fire, smoke, and acoustic sealing.

Suitable for single- and double-leaf fire rated timber doorsets, all intumescent strips are tested to BS 476-22 with smoke seals also tested to BS 476-31.1.

Intumescent strips are available in fire only, brush, and bladed options in both graphite and sodium silicate carrying comprehensive 30, 60 and 90 minute test evidence with many door core manufacturers.

Contents

Fire & Smoke Intumescent Strips	6-12
Fire Only Intumescent Strips	13-16
Fire & Smoke Meeting Stiles	17



RIGID BOX - PILE

PYROPLEX



Application

Fire and smoke resisting timber doorsets - edges and frames

Fixing

Self adhesive, friction fit

Performance

Fire tested to BS 476-20:22 & BS EN 1634-1
Smoke tested to BS 476-31.1 & BS EN 1634-3
Certifire CF355

Material

Intercalated Graphite

Length (mm)

2100

Sizes (mm)

10x4, 15x4, 20x4, 25x4, 30x4, 38x4

Colours

Black (**BK**) / Brown (**B**) / White (**W**) / Cream (**C**) / Grey (**G**) / Other colours on application



Dimensions



Order codes

Size + FS + Colour

eg. 104FSBK (10x4mm, Black)

RIGID BOX - SINGLE FLIPPER

PYROPLEX



Application

Fire and smoke resisting timber doorsets - edges and frames

Fixing

Self adhesive, friction fit

Performance

Fire tested to BS 476-20:22 & BS EN 1634-1
Smoke tested to BS 476-31.1 & BS EN 1634-3
Certifire CF822

Material

Intercalated Graphite

Length (mm)

2100

Sizes (mm)

10x4, 15x4, 20x4

Colours

Black (**BK**) / Brown (**B**) / White (**W**) / Cream (**C**) / Grey (**G**) / Other colours on application



Dimensions



Order codes

Size + SF + Colour

eg. 104SFBK (10x4mm, Black)

RIGID BOX - FLIPPER

PYROPLEX



TWIN FLIPPER



Application

Fire and smoke resisting timber doorsets - edges and frames

Fixing

Self adhesive, friction fit

Performance

Fire tested to BS 476-20:22 & BS EN 1634-1
Smoke tested to BS 476-31.1 & BS EN 1634-3
Certifire CF822

Material

Intercalated Graphite

Length (mm)

2100

Sizes (mm)

10x4, 15x4, 20x4

Colours

Black (**BK**) / Brown (**B**) / White (**W**) / Cream (**C**) / Grey (**G**) / Other colours on application

Order codes

Size + DF + Colour

eg. 104DFBK (10x4mm, Black)



TRIPLE FLIPPER



Application

Fire and smoke resisting timber doorsets - edges and frames

Fixing

Self adhesive, friction fit

Performance

Fire tested to BS 476-22 & BS EN 1634-1
Smoke tested to BS 476-31.1 & BS EN 1634-3
Certifire CF822

Material

Intercalated Graphite

Length (mm)

2100

Sizes (mm)

15x4, 20x4

Colours

Black (**BK**) / Brown (**B**) / White (**W**) / Cream (**C**) / Grey (**G**) / Red (**R**) / Other colours on application

Order codes

Size + TF + Colour

eg. 154TFBK (15x4mm, Black)



OFFSET FLIPPER



Application

Fire and smoke resisting timber doorsets - edges and frames

Fixing

Self adhesive, friction fit

Performance

Fire tested to BS 476-20:22 & BS EN 1634-1
Smoke tested to BS 476-31.1 & BS EN 1634-3
Certifire CF822

Material

Intercalated Graphite

Length (mm)

2100

Sizes (mm)

10x4, 15x4, 20x4

Colours

Black (**BK**) / Brown (**B**) / White (**W**) / Cream (**C**) / Grey (**G**) / Other colours on application

Order codes

Size + OF + Colour

eg. 104OFBK (10x4mm, Black)

THERM-A-STOP

INTUMESCENT SEALS LTD

**Application**

Fire and smoke resisting timber doorsets - edges and frames

Fixing

Self adhesive, friction fit

Performance

Fire resistance in accordance with BS 476-20:22 & BS EN 1634-1
Smoke tested in accordance with BS 476-31.1
Certifire CF387

Material

Intercalated Graphite

Length (mm)

2100

Sizes (mm)

10x4, 15x4, 20x4, 25x4, 30x4, 38x4

Colours

Black (**BK**) / Brown (**B**) / White (**W**) /
Other colours on application

**Dimensions****Order codes**

TH + Size + FS + Colour
eg. TH104FSBK (10x4mm, Black)

THERM-A-BLADE

INTUMESCENT SEALS LTD

**Application**

Fire and smoke resisting timber doorsets - edges and frames

Fixing

Self adhesive, friction fit

Performance

Fire resistance in accordance with BS 476-20:22 & BS EN 1634-1
Smoke tested in accordance with BS 476-31.1
Certifire CF387

Material

Intercalated Graphite

Length (mm)

2100

Sizes (mm)

10x4, 15x4, 20x4, 25x4, 30x4, 38x4

Colours

Black (**BK**) / Brown (**B**) / White (**W**) /
Other colours on application

**Dimensions****Order codes**

TH + Size + DF + Colour
eg. TH104DFBK (10x4mm, Black)

N30

SEALMASTER

**Application**

Fire and smoke resisting timber doorsets - edges and frames

Fixing

Pinned every 200mm

Performance

Fire tested to BS 476-22
Smoke tested to BS 476-31.1
Certifire CF462

Material

Mono Ammonium Phosphate

Lengths (mm)

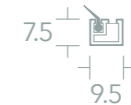
1050, 2100

Colour

Milled aluminium

Order codes

N30-1050 (1050mm)
N30-2100 (2100mm)

**Dimensions****N60**

SEALMASTER

**Application**

Fire and smoke resisting timber doorsets - edges and frames

Fixing

Pinned every 200mm

Performance

Fire tested to BS 476-22
Smoke tested to BS 476-31.1
Certifire CF462

Material

Mono Ammonium Phosphate

Lengths (mm)

1050, 2100

Colour

Milled aluminium

Order codes

N60 (1050mm)
N60-2100 (2100mm)

**Dimensions**

ULTIMA 60

SEALMASTER

**Application**

Fire and smoke resisting timber doorsets - edges and frames

Fixing

Pinned every 200mm

Performance

Fire resistance in accordance with BS 476-22
Smoke tested in accordance with BS 476-31.1

Material

Intercalated Graphite & Mono Ammonium Phosphate

Length (mm)

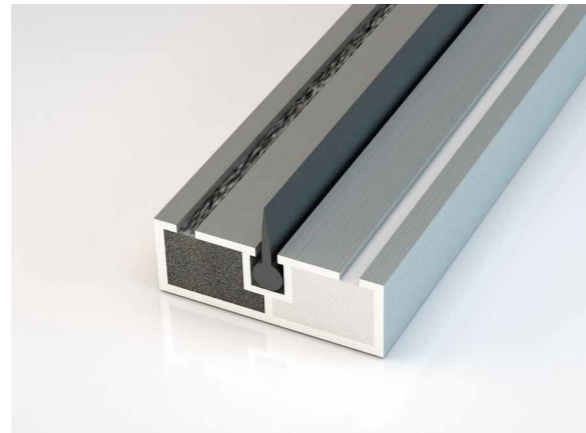
1050

Colour

Milled aluminium

Order codes

ULTIMA 60

**Dimensions****PRODUCT 69**

ENVIROGRAF

**Application**

Fire and smoke resisting timber doorsets - edges and frames

Fixing

Self-adhesive, pinned every 300mm

Performance

Fire resistance in accordance with BS 476-22:23

Material

Intercalated Graphite

Length (mm)

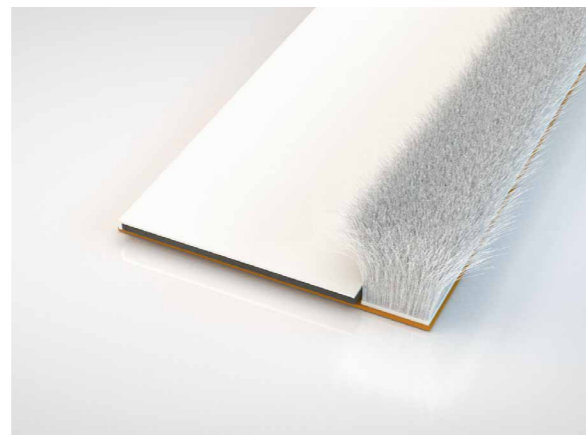
2100

Colours

Brown (**B**) / White (**W**)

Order codes

ES-SDS- + Colour
eg. ES-SDS-W (White)

**Dimensions****SS**

LORIENT

**Application**

Fire and smoke resisting timber doorsets - edges and frames

Fixing

Self adhesive, friction fit

Performance

Fire tested to BS 476-22 & BS EN 1634-1
Smoke tested to BS 476-31.1
Meets smoke requirements BS 9999
Certifire CF330 & CF341

Material

Sodium Silicate - Type 617 or Palusol 100P

Length (mm)

2100

Sizes (mm)

10x4, 15x4, 20x4, 25x4
Other sizes on application

Colours

Black (**BK**) / Brown (**B**) / White (**W**) /
Other colours on application

**Dimensions****Order codes**

LP + Size + SS + Colour
eg. LP1004SSBK (10x4mm, Black)

TS

LORIENT

**Application**

Fire and smoke resisting timber doorsets - edges and frames

Fixing

Self adhesive, friction fit

Performance

Fire tested to BS 476-22 & BS EN 1634-1
Smoke tested to BS 476-31.1
Meets smoke requirements BS 9999
Certifire CF330 & CF341

Material

Sodium Silicate - Type 617 or Palusol 100P

Length (mm)

2100

Sizes (mm)

10x4, 15x4, 20x4, 25x4
Other sizes on application

Colours

Black (**BK**) / Brown (**B**) / White (**W**) /
Other colours on application

**Dimensions****Order codes**

LP + Size + TS + Colour
eg. LP1004TSBK (10x4mm, Black)

DS LORIENT



Application

Fire and smoke resisting timber doorsets - edges and frames

Fixing

Self adhesive, friction fit

Performance

Fire tested to BS 476-22 & BS EN 1634-1
Smoke tested to BS 476-31.1
Meets smoke requirements BS 9999
Certifire CF330 & CF341

Material

Sodium Silicate - Type 617 or Palusol 100P

Length (mm)

2100

Sizes (mm)

10x4, 15x4, 20x4, 25x4
Other sizes on application

Colours

Black (**BK**) / Brown (**B**) / White (**W**) /
Other colours on application



Dimensions



Order codes

LP + Size + DS + Colour
eg. **LP1004DSBK** (10x4mm, Black)

FINESSE™ LORIENT



Application

Fire and smoke resisting timber doorsets - edges and frames

Fixing

Self adhesive, friction fit

Performance

Fire tested to BS 476-20:22 & BS EN 1634-1
Smoke tested to BS 476-31.1
Certifire CF330 & CF341

Material

Sodium Silicate - Type 617 or Palusol 100P

Length (mm)

2100

Sizes (mm)

15x4, 20x4

Colours

Black (**BK**) / Brown (**B**) / White (**W**) /
Other colours on application



Dimensions



Order codes

LP + Size + FDS/ + Colour
eg. **LP1504FDS/BK** (15x4mm, Black)

RIGID BOX PYROPLEX



Application

Fire resisting timber doorsets - edges and frames

Fixing

Self adhesive, friction fit

Performance

Fire tested to BS 476-22, BS EN 1634-1 &
BS EN 1363-1
Certifire CF355

Material

Intercalated Graphite

Length (mm)

2100

Sizes (mm)

10x4, 15x4, 20x4, 25x4, 30x4, 38x4

Colours

Black (**BK**) / Brown (**B**) / White (**W**) / Cream (**C**) /
Grey (**G**) / Other colours on application



Dimensions



Order codes

Size + FO + Colour
eg. **104FOBK** (10x4mm, Black)

FLEXIBLE PYROPLEX



Application

Fire resisting timber, composite and metal doorsets - edges and frames

Fixing

Self adhesive

Performance

Fire resistance in accordance with BS 476-22
Certifire CF355

Material

Intercalated Graphite

Lengths

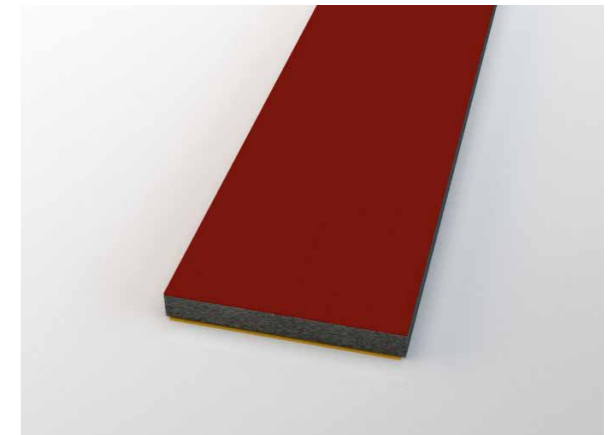
(10x2.5-15x2.5) 150m Coil, (20x2.5-25x2.5) 100m Coil,
(30x2.5) 75m Coil, (40x2.5) 50m Coil

Sizes (mm)

10x2.5 (**8979**), 10x4 (**8989**), 15x2.5 (**8980**), 15x4
(**30020**), 20x2.5 (**8981**), 20x4 (**30112**), 25x2.5 (**8988**),
30x2.5 (**8986**), 40x2.5 (**8983**), 40x4 (**30147**)

Colours

Black (**BLK**) / Brown (**BRN**) / White (**WHT**) / Cream (**CRM**) /
Grey (**GRY**) / Red (**RED**)



Dimensions



Order codes

PYR + Size Code/ + Colour
eg. **PYR8979/BLK** (10x2.5mm, Black)

STRIP

PYROPLEX



Application

Fire resisting timber, composite and metal doorsets - edges and frames

Fixing

Self-adhesive

Performance

Fire resistance in accordance with BS 476-22
Certifire CF355

Material

Intercalated Graphite

Lengths

(10x2-10x2.5) 250m Coil, (15x2-20x2) 200m Coil,
(25x2-30x2) 100m Coil, (30x2.5) 75m Coil, (45x2-50x2)
50m Coil

Sizes (mm)

10x2 (**30086**), 10x2.5 (**8492**), 15x2 (**30085**), 15x2.5
(**8501**), 20x2 (**30074**), 20x2.5 (**8921**), 25x2 (**30142**),
25x2.5 (**8934**), 30x2 (**30075**), 30x2.5 (**8958**),
45x2.5 (**8456**), 45x4 (**30187**), 50x2 (**30146**)

Colour

Dark grey



Dimensions



Order codes

PYR- + Size Code eg. PYR-8492 (10x2.5mm - 250m Coil)

FIRE SEAL

LORIENT



Application

Fire resisting timber doorsets - edges and frames

Fixing

Self adhesive, friction fit

Performance

Fire tested to BS 476-22 & BS EN 1634-1
Certifire CF330 & CF341

Material

Sodium Silicate - Type 617 or Palusol 100P

Length (mm)

2100

Sizes (mm)

10x4, 15x4, 20x4, 25x4

Colours

Black (**BK**) / Brown (**B**) / White (**W**) /
Other colours on application

Order codes

LP + Size + Colour eg. LP1004BK (10x4mm, Black)



Dimensions



THERM-A-SEAL

INTUMESCENT SEALS LTD



Application

Fire resisting timber doorsets - edges and frames

Fixing

Self adhesive, friction fit

Performance

Fire resistance in accordance with
BS 476-20:22 & BS EN 1634-1
Certifire CF387

Material

Intercalated Graphite

Length (mm)

2100

Sizes (mm)

10x4, 15x4, 20x4, 25x4 30x4, 38x4

Colours

Black (**BK**) / Brown (**B**) / White (**W**) /
Other colours on application.



Dimensions



Order codes

TH + Size + FO + Colour
eg. TH104FOBK (10x4mm, Black)

THERM-A-FLEX

INTUMESCENT SEALS LTD



Application

Various applications, including construction
joints and fire

Fixing

Self adhesive

Performance

Fire resistance in accordance with BS 476-22
Certifire CF387

Material

Intercalated Graphite

Length (mm)

2100

Sizes (mm)

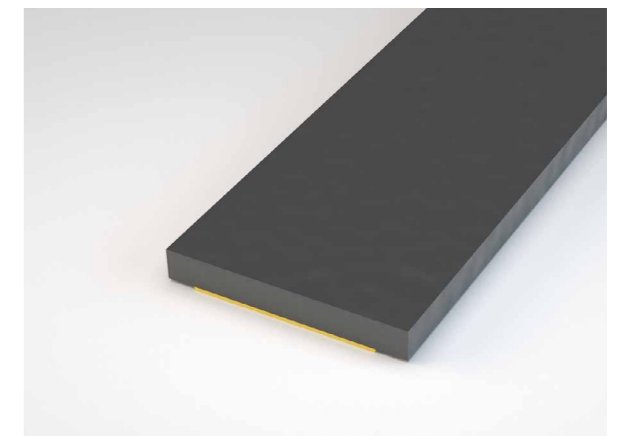
10x2, 15x2, 20x2, 54x2

Colour

Dark grey

Order codes

THFLEX- + Size + /SA eg. THFLEX-10x2/SA (10x2mm)



Dimensions



IF30

SEALMASTER

**Application**

Fire resisting timber doorsets - edges and frames

Fixing

Pinned every 200mm

PerformanceFire resistance in accordance with BS476-22
Certifire CF462**Material**

Mono Ammonium Phosphate

Length (mm)

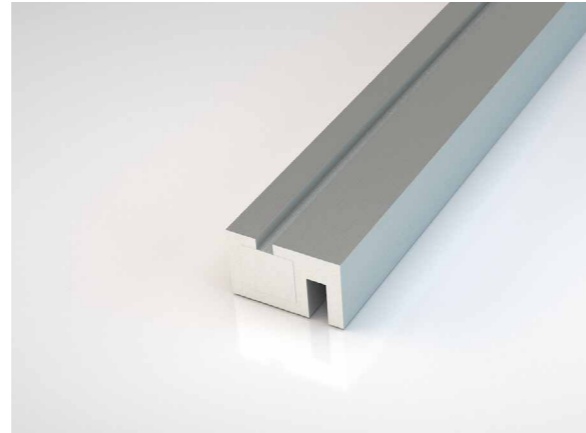
1050

Colour

Milled aluminium

Order codes

IF30 (9x6mm)



Dimensions

**IF60**

SEALMASTER

**Application**

Fire resisting timber doorsets - edges and frames

Fixing

Pinned every 200mm

PerformanceFire resistance in accordance with BS 476-22
Certifire CF462**Material**

Mono Ammonium Phosphate

Length (mm)

1050

Colour

Milled aluminium

Order codes

IF60 (21x7.5mm)



Dimensions

**IMN/IMP COMBINED INTUMESCENT**

SEALMASTER

**Application**

Fire and smoke resisting timber doorsets - meeting stiles

Fixing

Pinned every 200mm

PerformanceFire tested to BS 476-22
Smoke tested in accordance with BS 476-31.1
Certifire CF462**Material**

Mono Ammonium Phosphate

Length (mm)

1050

Colour

Milled aluminium

Order codes

IMP (21x7mm)

IMN (20.5x6mm)



Dimensions

**N60S/IMP COMBINED INTUMESCENT**

SEALMASTER

**Application**

Fire and smoke resisting timber doorsets - meeting stiles

Fixing

Pinned every 200mm

PerformanceFire tested to BS 476-22
Smoke tested in accordance with BS 476-31.1
Certifire CF462**Material**

Mono Ammonium Phosphate

Length (mm)

1050

Colour

Milled aluminium

Order codes

IMP (21x7mm)

N60S (21x7.5mm)



Dimensions



2. GLAZING SEALS

A range of glazing seals designed to provide effective sealing against fire and smoke by protecting glazed apertures.

Various systems are available for 30, 60 and 90 minute protection, for glazed timber doors and screens in a range of colour options, with the majority carrying third party certification and tested to BS 476-22.

Contents

30 Minute Systems	20-23
30 & 60 Minute Systems	23-26
60 & 90 Minute Systems	27-30
Glazing Liners	30-33
Non-Fire-Rated Systems	33



30 MINUTE SYSTEMS

PYROPLEX



TF115 - 30054



Application

Glazed apertures in fire resisting doors

Fixing

Self-adhesive

Performance

Fire tested to BS 476-20:22, BS EN 1634-1 & BS EN 1363-1
Certifire CF348

Material

Graphite based intumescent

Length

150m coil

Colours

Black (**BK**) / Brown (**BR**) / White (**W**) / Cream (**C**)

Order codes

TF115 + Colour
eg. **TF115BK** (Black)



TF130 - 30049



Application

Glazed apertures in fire resisting doors and screens

Fixing

Self-adhesive

Performance

Fire tested to BS 476-20:22, BS EN 1634-1 & BS EN 1363-1
Certifire CF348

Material

Graphite based intumescent

Length

100m coil

Colours

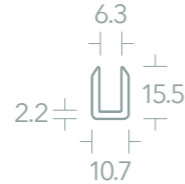
Black (**BK**) / Brown (**BR**) / White (**W**) / Cream (**C**)

Order codes

TF130 + Colour
eg. **TF130BK** (Black)



UCH30 - 8193



Application

Glazed apertures in fire resisting doors

Fixing

Held by glass

Performance

Fire tested to BS 476-20:22, BS EN 1634-1 & BS EN 1363-1
Certifire CF348
BM Trada Assessment 'Chilt/A08251'

Material

Graphite based intumescent

Glass thickness (mm)

5-7

Length

100m coil

Colour

Black

Order codes

UCH30/100 (15.5x10.7mm)
Cut lengths available

8492 GLAZING STRIP

PYROPLEX



Dimensions



Application

Glazed apertures in fire resisting doors.

Fixing

Self-adhesive

Performance

Fire tested to BS 476-22, BS EN 1634-1 & BS EN 1363-1
Certifire CF348
BM Trada Assessment 'Chilt/A08251'

Material

Graphite based intumescent

Length

250m coil

Size (mm)

10x2.5

Colour

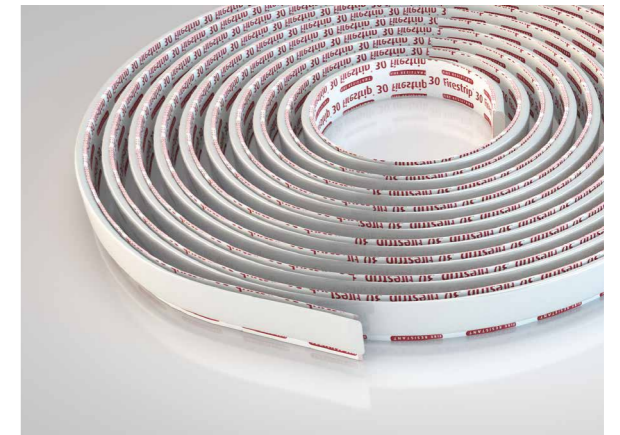
Dark Grey

Order codes

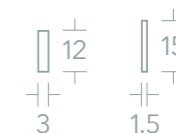
PYR-8492

FIRESTRIP 30

HODGSON SEALANTS



Dimensions



Application

Glazed apertures in fire resisting doors and screens

Fixing

Self-adhesive

Performance

Fire tested to BS 476-22 & BS EN 1364-1
Certifire CF297

Material

Intumescent strip sealant

Lengths

150m box, 15m coil (12x3mm), 30m coil (15x1.5mm)

Sizes (mm)

15x1.5, 12x3

Colours

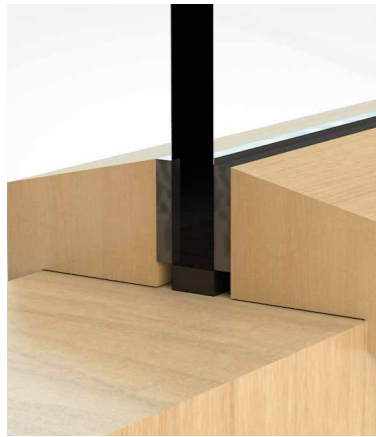
White (**WH**) / Brown (**BR**)

Order codes

MAS30- + Size + /Colour eg. **MAS30-15x1.5/BR** (15x1.5 - 150m box)
MAS30- + Size + /Colour + -COIL eg. **MAS30-12x3/BR-COIL** (12x3 - 15m coil)

30 MINUTE SYSTEMS

INTUMESCENT SEALS LTD



THERM-A-GLAZE 30



Application

Glazed apertures in fire resisting doors

Fixing

Self-adhesive

Performance

Fire tested to BS 476-20:22
Certifire CF284

Material

Graphite-based intumescent

Length (mm)

2100

Size (mm)

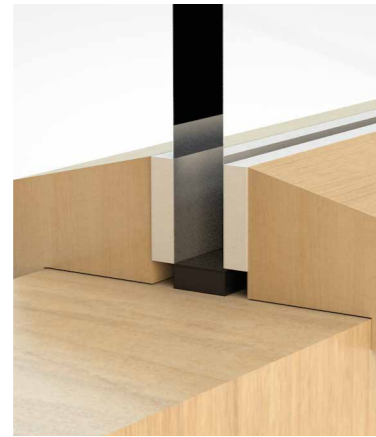
10x2

Colour

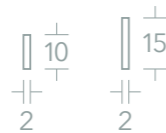
Black

Order code

THE30



THERM-A-GLAZE 45



Application

Glazed apertures in fire resisting doors and screens

Fixing

Self-adhesive

Performance

Fire tested to BS 476-20:22
Certifire CF284

Material

Mono Ammonium Phosphate

Length (mm)

2100

Sizes (mm)

10x2, 15x2

Colour

White

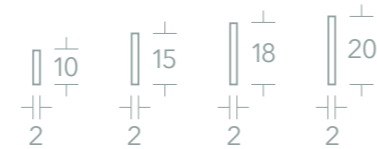
Order codes

THE45/ + Size

eg. THE45/10x2 (10x2mm)



THERM-A-STRIP



Application

Glazed apertures in fire resisting doors and screens

Fixing

Self-adhesive

Performance

Fire tested to BS 476-20:22
Certifire - referenced in various certificates

Material

Mono Ammonium Phosphate

Length (mm)

2100

Sizes (mm)

10x2, 15x2, 20x2, 25x2

Colour

White

Order codes

THSTRIP + Size +A

eg. THSTRIP10x2A (10x2mm)

FLEXIBLE FIGURE 1

LORIENT



Dimensions



Application

Glazed apertures in fire resisting doors

Fixing

Self-adhesive

Performance

Fire tested to BS 476-22
Certifire CF327

Material

Graphite based intumescent

Length

50m coil

Size (mm)

13x3.5

Colour

Black

Order codes

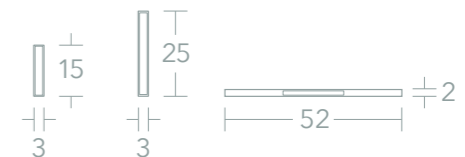
FIG1-BK

VISION

NORSEAL



Dimensions



Application

Glazed apertures in fire resisting doors, fanlights and side screens

Fixing

Self adhesive or kerf fit

Performance

Fire tested to BS 476-22
BM Trada Assessment 'Chilt/A12161'

Material

PVC encased intumescent

Length (mm)

2100

Colours

Black (BK) / Brown (BR) / White (WH)

Order codes

NORVision1503B/+ Colour

eg. NORVision1503B/BK (Vision FR30 15x3mm, Black)

NORV60K/25B/+ Colour

eg. NORV60K/25B/BK (Vision FR60 25x3mm + Liner, Black)

NORV60K/15B/+ Colour

eg. NORV60K/15B/BK (Vision FR60 15x3mm + Liner, Black)

NOR5202LNR (52x2mm Liner)

FIREGLAZE COMPOUND & TAPE

SEALMASTER



COMPOUND

Application

Glazed apertures in fire resisting doors and screens

Fixing

Bonded

Performance

Fire tested to BS 476-22
Certifire CF221

Material

Water-based compound

Size

310ml tube

Colours

Black (**BK**) / Brown (**B**) / White (**W**) / Grey (**G**)



Order codes

30 MINUTE - **FGZ + Colour** eg. FGZBK (Black)

60 MINUTE - **FGZ + Colour** eg. FGZBK (Black)
+ **GL60 + Size** eg. GL6045 (45x2mm)

TAPE

Application

Glazed apertures in fire resisting doors and screens

Fixing

Self-adhesive

Performance

Fire tested to BS 476-22
Certifire CF221

Material

Mono Ammonium Phosphate/ Ceramic fibre based
intumescent

Length (mm)

2100

Sizes (mm)

G30 - 10x2, 15x2, 20x2

FG2000 - 25x5, other sizes available on application

Colour

G30 - White

FG2000 - Black (**BK**) / Brown (**B**) / White (**W**) /
Grey (**G**) / Light Oak (**LO**)

Order codes

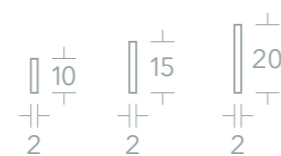
30 MINUTE - **G30/ + Size** eg. G30/10 (10x2mm)

60 MINUTE - **FG2000- + Size + Colour** eg. FG2000-25X5-LO
(25x5mm, Light Oak) + **GL60 + Size** eg. GL6045 (45x2mm)



Dimensions

G30



FG2000



INTUMESCENT FOAM GLAZING TAPE

SEALMASTER



Application

Glazed apertures in fire resisting doors and screens

Fixing

Self-adhesive

Performance

Fire tested to BS 476-22
Certifire CF5387

Material

Graphite based intumescent foam tape

Length

20m coil

Sizes (mm)

10x5, 15x5, 20x5

Colour

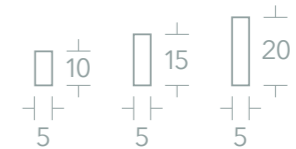
Black

Order codes

GTR + Size + FM eg. GTR10x5FM (10x5mm)



Dimensions



SYSTEM-36 PLUS

LORIENT



Application

Glazed apertures in fire resisting doors and screens
Suitable for curved corners and circular vision panels

Fixing

Held by glass

Performance

Fire tested to BS 476-22 & BS EN 1634-1
Certifire CF5060

Material / Colour

Graphite based intumescent / Black

Glass thickness (mm)

5-23

Dimensions / Order codes



SYS36/6-60mtr
(5-6mm Glass)
36/6 - 60m coil



SYS36/7-60mtr
(7mm Glass)
36/7 - 60m coil



SYS36/10-30mtr
(10-11mm Glass)
36/10 - 30m coil



SYS36/15-30mtr
(15mm Glass)
36/15 - 30m coil



SYS36/23+25mtr
(23mm Glass)
36/23 - 25m coil



INTERDENS®
BASF WOLMAN



Application
Glazed apertures in fire resisting doors and screens

Fixing
Self-adhesive

Performance
Fire tested to BS 476-22
Certifire - referenced in various certificates

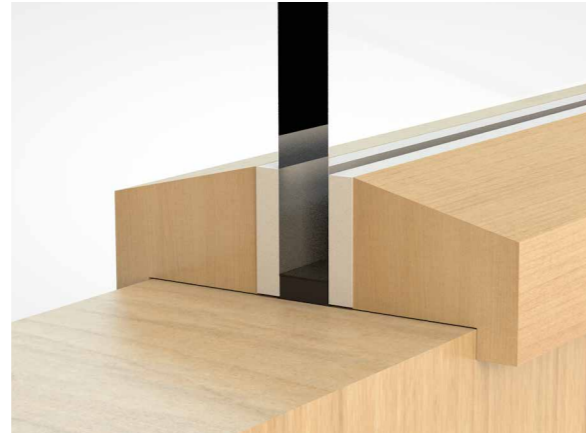
Material
Mono Ammonium Phosphate based intumescent

Length (mm)
1000

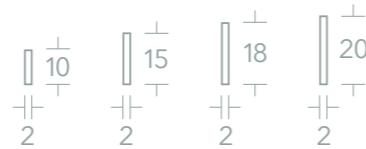
Sizes (mm)
10x2, 15x2, 18x2, 20x2

Colour
White

Order codes
Interdens + Size
eg. *Interdens10x2* (10x2mm)



Dimensions



KERAFIX 2000®
ROLF KUHN



Application
Glazed apertures in fire resisting doors and screens

Fixing
Self-adhesive

Performance
Fire tested to BS 476-22
Certifire - referenced in various certificates

Material
Calcium Magnesium Silicate (ceramic fibre tape)

Length
10m Coil

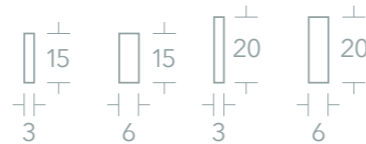
Sizes (mm)
15x3, 15x6, 20x3, 20x6

Colour
White

Order codes
CFT + Size
eg. *CFT15x3* (15x2mm)



Dimensions



PFG1HR
PYROPLEX



Application
Glazed apertures in fire resisting doors

Fixing
Self-adhesive

Performance
Fire tested to BS 476-22
Certifire CF5287

Material
Graphite-based intumescent

Glass thickness (mm)
6, 15, 23

Length (mm)
2100

Colour
Black

Order codes
PYRFG1HR/BLK
(25x4.2mm seal & 53x1.25mm liner/Black)



Dimensions



FIRESTRIP 60
HODGSON SEALANTS



Application
Glazed apertures in fire resisting doors and screens

Fixing
Self-adhesive

Performance
Fire tested to BS 476-22 & BS EN 1364-1
Certifire CF297

Material
Intumescent strip sealant

Length
105m box, 15m coil

Colours
White (**WHT**) / Brown (**BR**)

Order codes
MAS60-20x3/ + Colour -COIL
eg. *MAS60-20X3/WHT-COIL* (White, 15m coil)
MAS60-20x3/ + Colour
eg. *MAS60-20X3/BR* (Brown, 105m box)



Dimensions



THERM-A-GLAZE 60

INTUMESCENT SEALS LTD

**Application**

Glazed apertures in fire resisting doors and screens

Fixing

Self-adhesive

PerformanceFire tested to BS 476-20:22
Certifire CF284**Material**PVC encased Phosphate based intumescent,
non-combustible liner.**Length (mm)**

2100

ColoursBlack (**BK**) / Brown (**B**) / White (**W**) / Cream (**C**)**Order codes****THE60 + Colour** eg. **THE60BK** (Black)

All liner for Therm A Glaze 60 comes in Pink

**Dimensions****UNIVERSAL**

NORSEAL

**Application**

Glazed apertures in fire resisting doors

Fixing

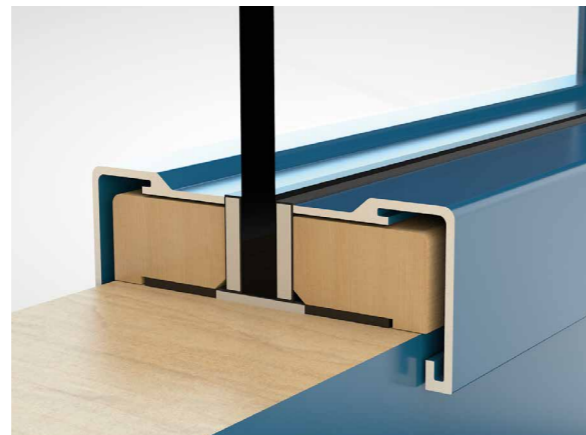
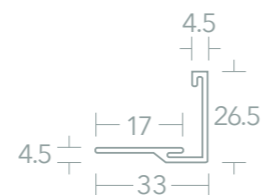
Screw

PerformanceFire tested to BS 476-22
BM Trada Assessment 'Chilt/A06218'**Material**

PVC encased intumescent, Aluminium bead cover

Length (mm)

2100

Order codes**NOR/UniClad/Mill** (26.5x33mm/Mill finish)**NOR/UniClad/SAA** (26.5x33mm/SAA finish)**Dimensions****SYSTEM 90+**

LORIENT

**Application**

Glazed apertures in fire resisting doors and screens

Fixing

Held by glass

PerformanceFire tested to BS 476-22
Certifire CF185**Material**

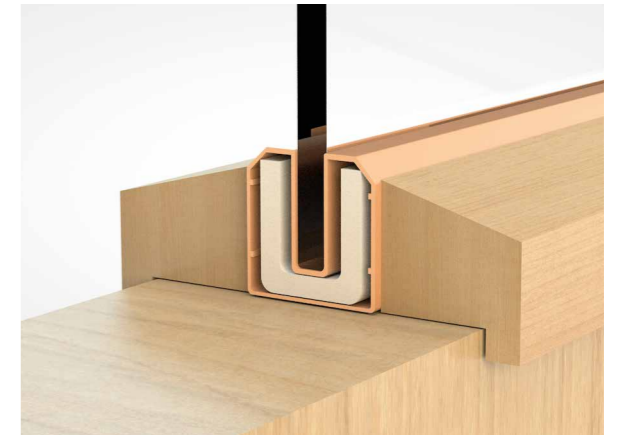
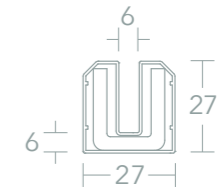
Sodium Silicate intumescent

Glass thickness (mm)

5-6

Length (mm)

2100

ColourBlack (**BK**) / Brown (**B**) / White (**W**)**Order codes****SYS60 + Colour** eg. **SYS60BK** (Black)**Dimensions****BLACK GLAZING TAPE**

SEALMASTER

**Application**

Glazed apertures in fire resisting doors and screens

Fixing

Self-adhesive

PerformanceFire tested to BS 476-22
Certifire - referenced in various certificates**Material**

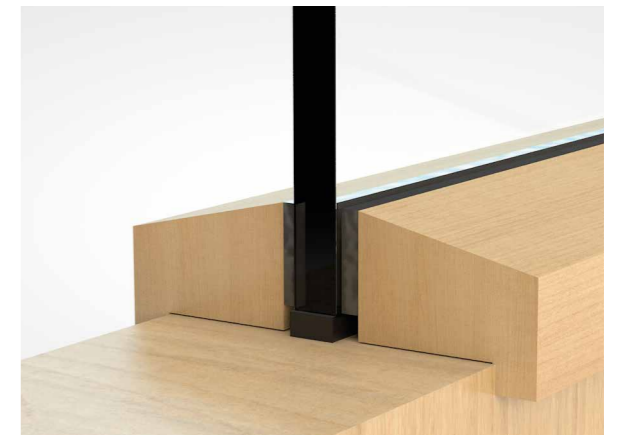
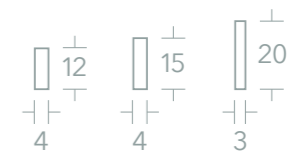
Non-ceramic fibre glazing tape

Length

10m coil

Sizes (mm)12x4 (**12**), 15x4 (**15**), 20x4 (**20**)**Colour**

Black

Order codes**BGT4x + Size + x10M** eg. **BGT4x12x10M** (12x4mm)**Dimensions**

FIREGLAZE TAPE

SEALMASTER



Application

Glazed apertures in fire resisting doors and screens

Fixing

Self-adhesive

Performance

Fire tested to BS 476-22
Certifire CF5428

Material

Medium pressure intumescent

Length (mm)

2100

Sizes (mm)

10x2.5, 17x2.5, 20x2.5, 24x2.5, 25x2.5, 28x2.5, 30x2.5,
36x2.5, 40x2.5, 54x2.5, 59x2.5, 63x2.5, 64x2.5

Colour

Black

Order codes

FGT + Size eg. FGT10X2.5 (10x2.5mm)



Dimensions



LINER N

NORSEAL



Application

Glazed apertures in fire resisting doors

Fixing

Self-adhesive

Performance

Fire tested on BS 476-22
Certifire CF297

Material

Non-combustible intumescent liner

Length (mm)

2100

Colour

Pink/White

Order code

LINER'N'

Other sizes available on application



Dimensions



THERM-A-LINE

INTUMESCENT SEALS LTD



Application

Glazed apertures in fire resisting doors and screens

Fixing

Self-adhesive

Performance

Fire tested to BS 476-22
Certifire CF284

Material

Non-combustible intumescent liner

Length (mm)

2100

Colour

Pink/White

Order codes

LINER'S'40 (40x2mm)

LINER'S'45 (45x2mm)

LINER'S' (54x2mm)

LINER'S'63 (63x2mm)

Other sizes available on application



Dimensions



GL 60

SEALMASTER



Application

Glazed apertures in fire resisting doors and screens

Fixing

Self-adhesive

Performance

Fire tested to BS 476-22
Certifire CF221

Material

Non-combustible intumescent liner

Length (mm)

2100

Sizes (mm)

45x2, 54x2, 63x2

Colour

White

Order codes

GL60 + Size eg. GL6045 (45x2mm)

Other sizes available on application



Dimensions



PALUSOL LINER

BASF WOLMAN

**Application**

Glazed apertures in fire resisting doors and screens

Fixing

Self-adhesive

Performance

Fire tested to BS 476-22

Certifire - referenced in various certificates

Material

Sodium Silicate intumescent liner

Length (mm)

1000

Sizes (mm)

44x2, 54x2

Colour

White

Order codes**Palusol + Size +/SA** eg. **Palusol44x2/SA** (44x2mm)

Other sizes available on application

**Dimensions****THERM-A-SOL**

INTUMESCENT SEALS LTD

**Application**

Glazed apertures in fire resisting doors and screens

Fixing

Self-adhesive

Performance

Fire tested to BS 476-22

Certifire - referenced in various certificates

Material

Sodium Silicate intumescent liner

Length (mm)

2100x1100 sheet

Size (mm)

2mm thick

Colour

White

Order code

THSOL

**LX LINER**

LORIENT

**Application**

Glazed apertures in fire resisting doors and screens

Fixing

Self-adhesive

Performance

Fire tested to BS 476-22

Certifire - referenced in various certificates

Material

Sodium Silicate intumescent liner

Length (mm)

2100

Sizes (mm)

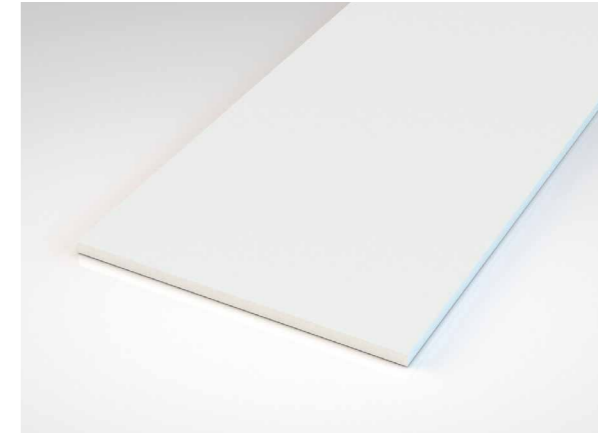
44x2, 54x2

Colour

White

Order codes**LX4402-2100** (44x2mm)**LINER'L'2100** (54x2mm)

Other sizes available on application

**Dimensions****CLOSED CELL FOAM TAPE**

NORSEAL

Application

Glazed apertures in fire rated and weatherproof doors and screens

Fixing

Self-adhesive

Material

Closed Cell Foam

Length (m)

20m Coil

Size (mm)

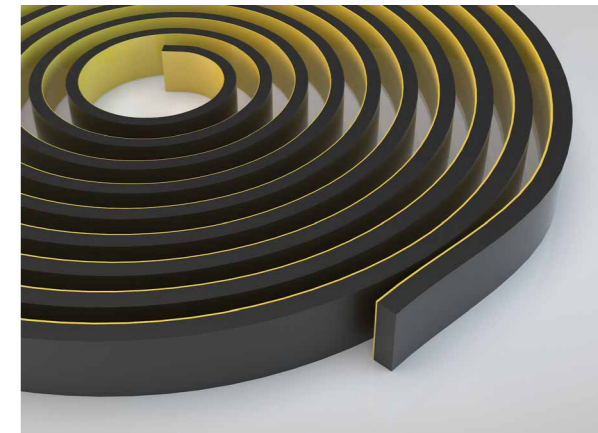
15x4

Colour

Black

Order code**CCF15x4BK**

Other sizes and lengths available on application

**Dimensions**

3. GRILLES & COVERS

Intumescent air transfer grilles allow movement of air when fitted into doors, walls and ductwork in a building. Day-to-day this enables efficient ventilation but during a fire will seal shut, stopping the fire spreading further. Grilles are available in a range of sizes and offer up to 60 minutes integrity in accordance with BS 476-22.

A range of matching steel vent covers for grilles in powder-coated finishes are available.

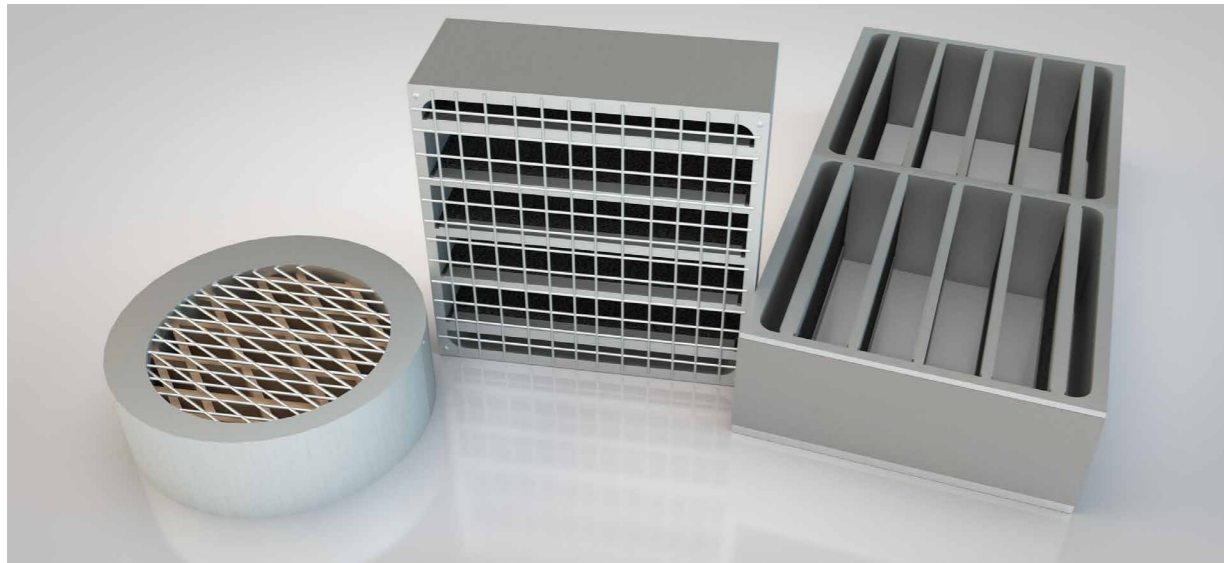
Contents

Intumescent Grilles	36
Covers	37



INTUMESCENT AIR TRANSFER GRILLES

NORSEAL / PYROPLEX



NORSEAL CIRCULAR

Application
Apertures within concrete walls

Fixing
Screw or pin securely

Performance
Fire rating in accordance with BS 476-20:22

Material
Galvanised steel, Graphite

Sizes (mm) - diameter
100 (4), 150 (6), 200 (8)

Colour
Silver, Black intumescent

Order codes
GRI/C- + Size + N
eg. **GRI/C-4N (100mm)**

NORSEAL RECTANGULAR

Application
Apertures within concrete walls

Fixing
Screw or pin securely

Performance
Fire rating in accordance with BS 476-20:22

Material
Galvanised steel, Graphite

Sizes (mm)
100x100, 150x150, 200x200, 225x075, 225x150, 225x225, 250x250, 300x150, 300x225, 300x300

Colour
Silver, Black intumescent

Order codes
GRI- + Size + N
eg. **GRI-100x100N (100x100mm)**
Other sizes available on application

PYROPLEX RECTANGULAR

Application
Apertures within fire resisting timber doorsets

Fixing
Screw or pin securely

Performance
Fire tested to BS 476-22
IFC Certification - IFCC1001

Material
Galvanised steel, Graphite

Sizes (mm)
150x150, 225x112, 225x225, 150x300, 300x300

Colour
Silver, Black intumescent

Order codes
ATG- + Size
eg. **ATG-300x150 (300x150mm)**
Other sizes available on application

COVER PLATE

NORSEAL / PYROPLEX



NORSEAL COVER PLATE

Application
Covers apertures in doors and walls

Fixing
Screw fixed

Performance
Up to 67% free area
Can be used with Norseal intumescent block

Material
Zintec coated steel

Sizes (mm)
To suit apertures 100x100, 150x150, 200x200, 225x75, 225x150, 225x225, 250x250, 300x150, 300x225, 300x300
Other sizes on application

Colours
Silver (S) / White (W)
RAL coated on application

Order codes
COV- + Size + Colour
eg. **COV-100x100/S (100x100mm, Silver)**

PYROPLEX COVER PLATE

Application
Covers apertures in doors and walls

Fixing
Screw fixed

Performance
Up to 67% free area

Material
Zintec coated steel

Sizes (mm)
To suit apertures 150x150, 225x112, 225x225, 150x300, 300x300

Colours
Silver (S) / White (W)

Order codes
Square plates = FP + Size + Colour
eg. **FP150S (150x150mm, Silver)**
Rectangular plates = FP + Size + /Colour
eg. **FP300X150/S (300x150mm, Silver)**

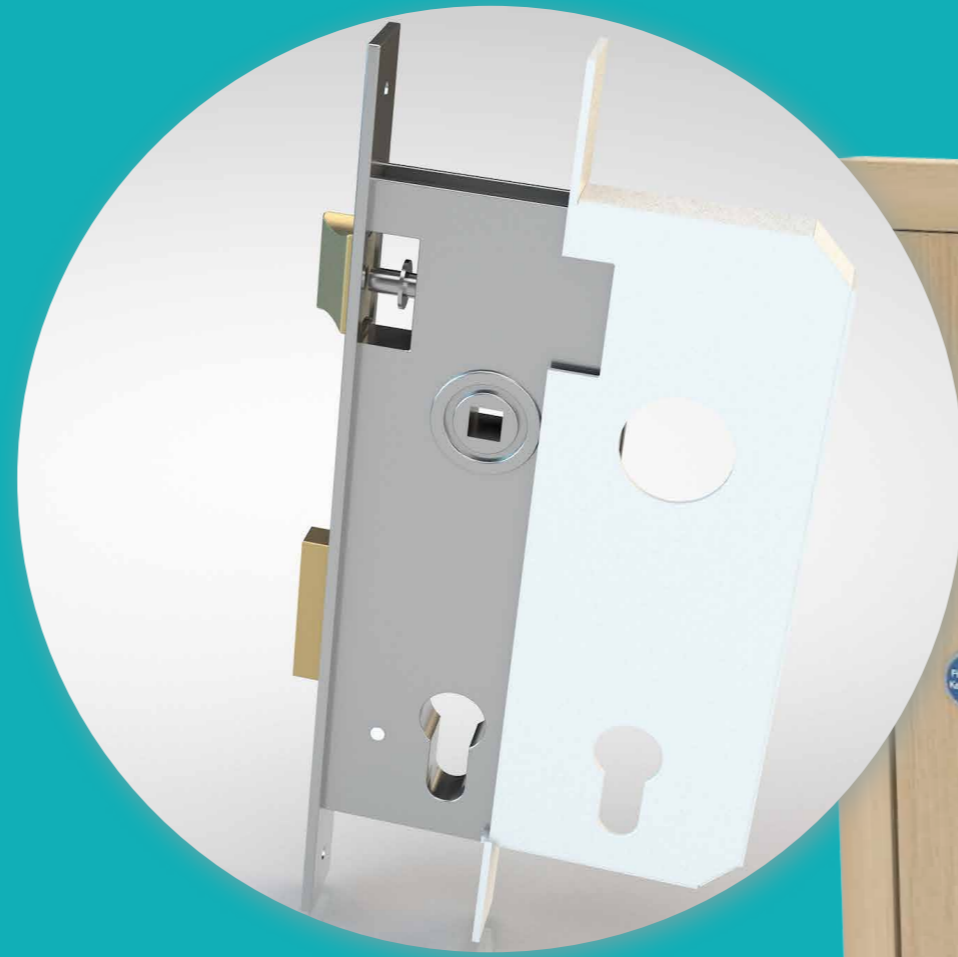
4. IRONMONGERY PROTECTION

Low pressure intumescent sealing solutions for a variety of ironmongery products including hinges, flush bolts, door closers, and locks, designed to help prevent the transfer of heat through door hardware during a fire. Available in graphite and Interdens® material, they provide up to 120 minute fire resistance in accordance with BS 476-22.

Interdens® is the registered trade mark of BASF Wolman GmbH, Sinzheim, Germany.

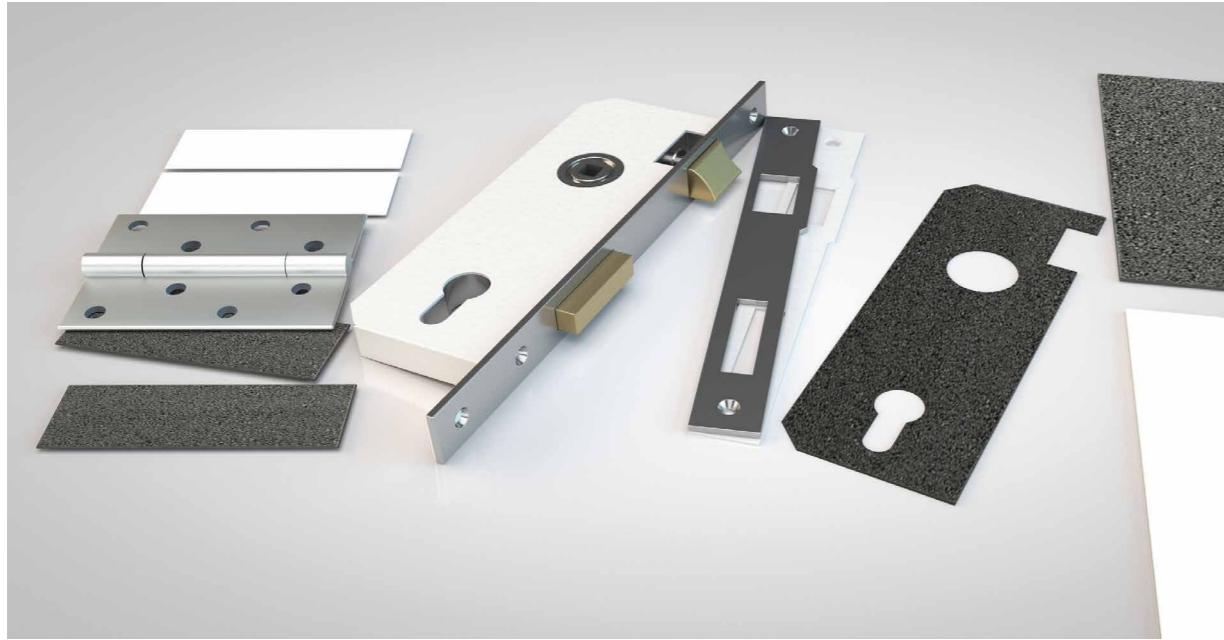
Contents

Intumescent Hinge Pads	40
Intumescent Lock Kits	41
Intumescent Sheets	41



IRONMONGERY PROTECTION

NORSEAL



INTUMESCENT HINGE PADS



Application
Behind hinge blades on fire resisting doorsets

Performance
Fire resistance in accordance with BS 476-22

GRAPHITE HINGE PADS

Size (mm)	Colour	Thickness (mm)	Order codes
100x30	Dark Grey	0.5	NOR905-100x30
		0.5	NOR905-100x30/R (Radius)
		1	NOR910-100x30/R (Radius)

INTERDENS® HINGE PADS

Size (mm)	Colour	Thickness (mm)	Order codes
100x30	White	1.0 (Type 15)	Interdens/100x30x1
		1.0 (Type 15)	Interdens/100x30x1/RADIUS (Radius)
		2.0 (Type 36)	Interdens/100x30x2/RADIUS (Radius)

INTUMESCENT LOCK KITS

Application
At lock and latch locations within fire resisting doorsets

Performance
Fire resistance in accordance with BS 476-22

GRAPHITE

Thickness (mm)	Colour
1	Dark Grey

Intumescent Lock Mask (European Sashlock)

Order code
NOR910-TH100

INTERDENS®

Thickness (mm)	Colour
1	White

Lock Mask (European Sashlock/DIN Lock)

Order code
INT(1)TH100

Lock Forend 235mm

Order code
INT(1)FEP

Flush Bolt 200mm S/A

Order code
INT(1)FL/PK-200

Lock Strike Plate 177x32mm

Order code
INT(1)SPP

AV2/3 Universal Kit for Locks and Keeps

Order code
INT(1)AV2/3KIT

Norseal can manufacture intumescent kits to all ironmongery requirements

Contact us on 01661 830088 for bespoke sizes



INTUMESCENT SHEETS

Application
Various locations within fire resisting doorsets.

Performance
Fire resistance in accordance with BS 476-22

Size (mm)	Colour	Material	Thickness (mm)	Order codes
1000x500	White	Interdens	1	INT(1)1000X500/SA
1000x500	White	Interdens	2	INT(2)1000X500/SA
1000x500	Dark Grey	Graphite	0.5	NOR905-1000x500
1000x500	Dark Grey	Graphite	1	NOR910-1000x500
1000x900	Dark Grey	Graphite	2	NOR920

5. DOOR HARDWARE

A range of letterplates, security cowls, and door viewers.

Letterplates are available with up to 60 minute fire protection in accordance with BS 476-22, and security certified to TS008.

Smoke and acoustic variants are also available in a selection of finishes.

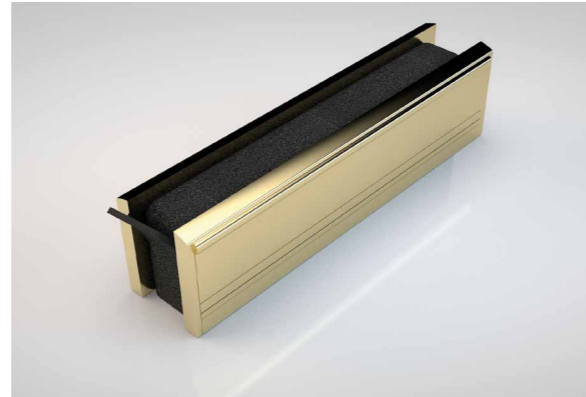
Contents

Letterplates	44-45
TS008 Compliant Letterplates	46-48
Door Viewers	49



ADVANTAGE / ADVANTAGE PLUS

NORSEAL

**ADVANTAGE****Application**

Fire resisting timber doorsets, 40-80mm thick

Fixing

Bolted together and screwed

Performance

Fire resistance in accordance with BS 476-22
 Anti-snap flap with 180 degree opening
 Tested in accordance with TS32 (15,000 cycles)
 Water tightness up to 200Pa in accordance with BS 5368-3

Material

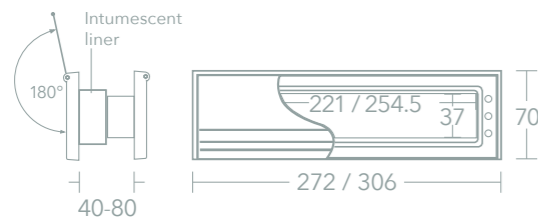
Plastic frame, Aluminium flaps

Sizes (mm)

10" - 272x70 (221x37 internal dimension)
 12" - 306x70 (255x37 internal dimension)

Colours

Black frame - Satin Silver (**SAA**) / Satin Nickel (**SNK**)
 / Satin Gold (**GAA**) / Polished Gold (**GLD**) / Polished
 Silver (**PSL**) / Polished Chrome (**PCH**) flaps / Other
 finishes on application

Order codes**LET-BK- + Colour + /Size (inches)**eg. **LET-BK-SAA/10** (Satin silver / 10" - 272x70mm)**ADVANTAGE PLUS****Application**

Fire resisting timber doorsets, 40-80mm thick

Fixing

Bolted together and screwed

Performance

Fire resistance in accordance with BS 476-22
 Anti-snap flap with 180 degree opening
 A4 aperture to BS 2911 (P209 only)

Material

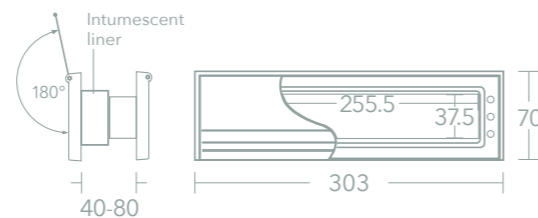
Aluminium

Size (mm)

303x70 (255x37 internal dimension)

Colours

Satin Silver (**S**) / Polished Silver (**PS**) / Polished Gold
 (**PG**) / Gold Anodised (**GAA**) / Other finishes on
 application

Order codes**LET-P209 + Colour**eg. **LET-P209S** (Satin silver)**NOR400 EDGE / NOR400**

NORSEAL

**NOR400 EDGE****Application**

Fire resisting timber doorsets, 40-80mm thick

Fixing

Bolted together

Performance

Fire resistance in accordance with BS 476-22
 Anti-snap flap with 180 degree opening
 A4 aperture to BS 2911
 Salt spray tested to BE EN 1670 - Class 5
 20,000 cycle tested

Material

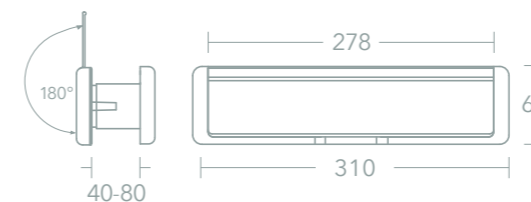
Plastic frame, high quality Zinc flaps

Size (mm)

310x68 (278x44 internal dimension)

Colours

Black frame - Polished Chrome (**PC**) / Satin Chrome
 (**SC**) / Gold (**GLD**) flaps / Other finishes on application

Order codes**NOR400/EDGE/ + Colour**eg. **NOR400/EDGE/PC** (Polished chrome)**NOR400****Application**

Fire resisting and acoustic timber doorsets, 40-80mm thick

Fixing

Bolted together

Performance

Fire resistance in accordance with BS 476-22
 Anti-snap flap with 180 degree opening
 A4 aperture to BS 2911
 Salt spray tested to BE EN 1670 - Class 5
 Sound reduction up to 95% of door's fully caulked
 performance (FCP) when used in conjunction with
 appropriate Norsound seals
 30,000 cycle tested

Material

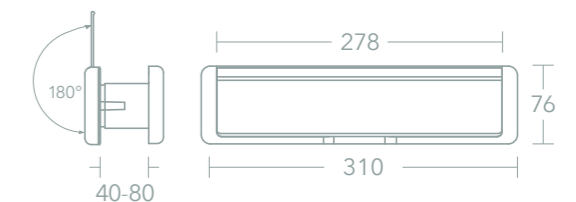
High quality Zinc

Size (mm)

310x76 (278x44 internal dimension)

Colours

Polished Chrome (**PC**) / Satin Chrome (**SC**) / Gold
 (**GLD**) / Other finishes on application

Order codes**NOR400 + Colour**eg. **NOR400SC** (Satin chrome)

SOTERIAN

UAP



Application

Fire resisting, Secured by Design and/or PAS24 timber doorsets

Fixing

Bolted together

Performance

TS008 certified
Certifire approved
Smoke tested in accordance with BS EN 1634-3
Salt spray tested to BS EN 1670 - Class 5
20,000 cycles

Material

Aluminium (stainless steel Nanocoat option available)

Door thickness (mm)

44, 54, 58

Size (mm)

305x75 (260x53 internal dimension)

Colours

Internal - White (**WHT**) / Gold Anodised (**GAA**) / Polished Silver (**PSL**) / Satin Silver Anodised (**SSA**)

External Frame - Black (**BLK**) / Gold Anodised (**GAA**) / Polished Silver (**PSA**) / Satin Silver Anodised (**SSA**) / Powder Coated White (**WHT**)

Door types

Composite (**CIN**) and Timber (**TIN**)

Fire rating

FD30 (**30**) and FD60 (**60**).
(FD60 only available for timber doors)

Order codes

Internal
TS008/- + Fire Rating + Door thickness + Door Type + /Finish
eg. **TS008/3044CIN/WHT**
(44mm, FD30, Composite door, White finish)

External Frame

TS008/EXFR/ + /Finish
eg. **TS008/EXFR/BLK** (External FR Frame, Black finish)

Dimensions



POSTMASTER PROFESSIONAL

YALE



Application

Fire resisting, Secured by Design and/or PAS24 timber doorsets

Fixing

Bolted together

Performance

TS008-certified
Salt spray tested to BE EN 1670 - Class 5
20,000 cycles
25 year surface finish guarantee
10 year mechanical guarantee

Material

Stainless steel external flap, Aluminium internal flap

Door thickness (mm)

40-75

Size (mm)

300x98

Colours

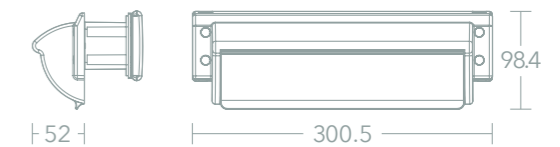
Internal - White (**WH**) / Black (**BK**)

External - White (**WH**) / Black (**BK**) / Chrome (**CH**) / Satin Silver (**SS**) / Polished Gold (**GO**) / Brushed Silver Effect (**BS**)

Order codes

TS008/FD + /External Colour + /Internal Colour
eg. **TS008/FD/SS/WH** (Satin Silver with White Internal finish)

Dimensions



NOR400 SHIELD

NORSEAL



Application

Fire resisting, Secured by Design and/or PAS24 timber doorsets

Fixing

Screw-fixed

Performance

TS008 certified
Salt spray tested to BS EN 1670 - Class 5

Material

High quality Zinc

Door thickness (mm)

40-80

Size (mm)

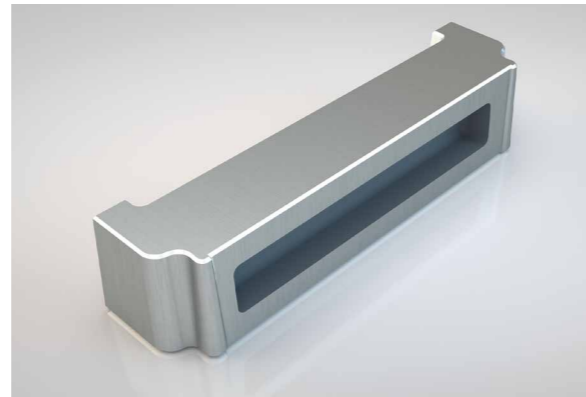
354x80 (278x44 internal dimension)

Colours

Black (001) / Chrome (002) / Graphite (005)
Other finishes on application

Order codes

3F + Colour eg. 3F001 (Black)



Dimensions



SECURITY COWL

NORSEAL

Application

Doorsets incorporating a letterplate

Fixing

Screw-fixed

Performance

Benefits letterbox security by obstructing views from the outside, preventing manipulation of locks, and limiting attacks through the letterbox flap.

Material

Aluminium

Size (mm)

340 - for use with 306mm overall size letterplates maximum

Colour

Satin Silver (S) / Satin Gold (G)

Order codes

LET/COWL/ + Colour eg. LET/COWL/S



Dimensions



FIRE RATED DOOR VIEWERS

NORSEAL



Application

Fire resisting timber doorsets

Fixing

Screwed together

Performance

Fire resistance in accordance with BS 476-22
120 or 160 degree viewing angle options

Material

Glass lens, Brass body

Door thickness (mm)

35-54

Size (mm)

15 (120°), 28 (160°)

Colour

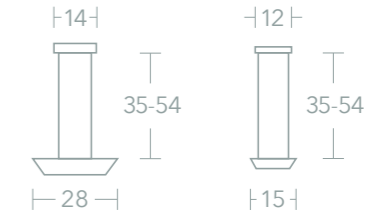
Chrome (C) / Brass (B)

Order codes

DV + Size + /Colour eg. DV160/C (Chrome 160 degrees)



Dimensions



FIRECHECK DOOR VIEWERS

UAP



Application

Fire resisting, Secured by Design and/ or PAS24 timber and composite doorsets

Fixing

Screwed together

Performance

60 minute fire resistance in accordance with BS EN 1634-1 in timber doors
30 minute fire resistance in accordance with BS EN 1634-1 in composite doors
120 degree viewing angle

Material

Glass lens, Brass body

Door thickness (mm)

35-55

Colour

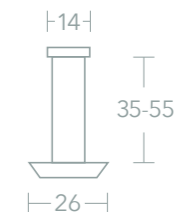
Polished Chrome (PC) / Satin Chrome (SC) / Brass (B)

Order codes

FCDV + /Colour eg. FCDV/PC (Polished Chrome)



Dimensions



6. ACOUSTIC SEALS

A combination of perimeter, door bottom, and meeting stile seals provide an excellent barrier to airborne sound for a variety of door applications. Isolating rooms in a building from noise by discreetly sealing the gap around a door, they ensure minimum impact on opening and closing forces.

Acoustic data is verified by independent UKAS-accredited test facilities and satisfies guidance recommended in Approved Document E and Building Bulletin 93.

Contents

Acoustic Perimeter Seals	52-57
Meeting Stile Seals	58-59
Acoustic Door Bottom Seals	60-64
Surface Mounted Acoustic Seals	65-66
Metal Door Acoustic Seals	67-68
Additional Options for Timber Doors	69



NOR710

NORSOUND BY NORSEAL



Application

Around the head and jambs of acoustic and smoke control doorsets

Performance

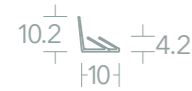
Smoke tested in accordance with BS 476-31.1
Acoustically tested in accordance with BS EN ISO 10140-2
1,000,000 cycle tested

Material

Flexible and rigid PVC



NOR710



Fixing
Self-adhesive

Performance
Certifire CF629

Lengths (mm)
2100, 3000

Colours
Black (**BK**) / Brown (**B**) / White (**W**) / Grey (**G**)

Order codes
NOR710/ + Colour + -Length
eg. **NOR710/BK-2100**
(2100mm, Black)

Other lengths available on application

NOR710SR



Fixing
Kerf-fit

Length (mm)
2100

Colours
Black (**BK**) / Brown (**B**) / White (**W**)

Order codes
NOR710SR + Colour
eg. **NOR710SRBK** (Black)

NORL710SR



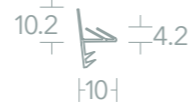
Fixing
Kerf-fit

Length (mm)
2100

Colour
White (**W**)

Order code
NOR710LSRW
(2100mm length / White)

NOR710FR



Fixing
Kerf-fit

Length (mm)
2100

Colours
Black (**BK**) / Brown (**B**) / White (**W**)

Order codes
NOR710FR + Colour
eg. **NOR710FRBK** (Black)

NOR710STOP

NORSOUND BY NORSEAL



Application

Around the head and jambs of acoustic and smoke control doorsets

Fixing

Kerf-fit and Self-adhesive

Performance

Smoke tested in accordance with BS 476-31.1
Acoustically tested in accordance with BS EN ISO 10140-2
1,000,000 cycle tested

Material

Flexible and rigid PVC

Length (mm)

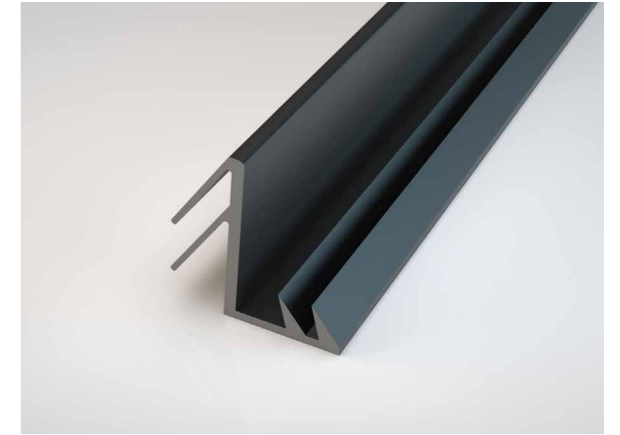
2100

Colours

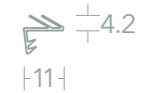
Black (**BLK**) / Brown (**BRN**) / White (**WHT**)

Order codes

NOR710ST-2100/ + Colour
eg. **NOR710ST-2100/BLK** (Black)
Other lengths available on application



Dimensions



NOR720

NORSOUND BY NORSEAL



Application

Around the head and jambs of smoke control doorsets or at the meeting stile of acoustic doorsets

Fixing

Kerf-fit

Performance

Smoke tested in accordance with BS 476-31.1
Acoustically tested in accordance with BS EN ISO 10140-2
Certifire CF629

Material

TPE

Lengths (mm)

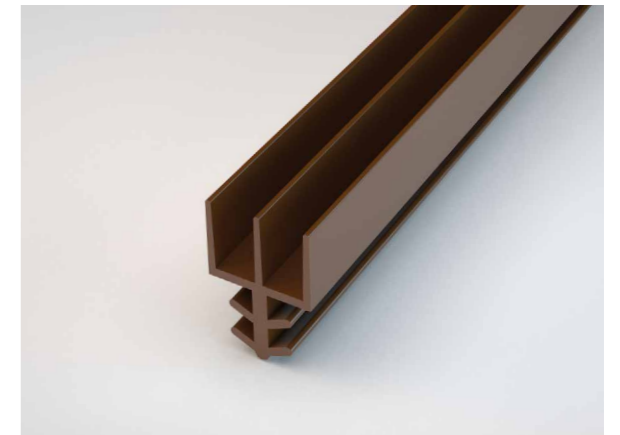
2100, 3000

Colours

Black (**BLK**) / Brown (**BRN**) / White (**WHT**)

Order codes

NOR720/ + Length/ + Colour
eg. **NOR720/2100/BLK** (2100mm, Black)
Other lengths available on application



Dimensions



NOR755

NORSOUND BY NORSEAL

**Application**

Around the head and jambs of acoustic doorsets

Fixing

Screw-fixed

Performance

Acoustically tested in accordance with BS EN ISO 10140-2

Material

Aluminium, Silicone gasket

Lengths (mm)

1000, 2100

Colours

Satin Silver, Grey gasket

Order codes

NOR755+ Length eg. NOR755-1000 (1000mm)



Dimensions

**TEARDROP SEAL**

NORSEAL

**Application**

Around the head and jambs of acoustic and smoke control doorsets

Fixing

Self-adhesive

PerformanceAcoustically tested to BS EN ISO 10140-2
Tested up to 38 dB**Material**

Silicone

Length

50m coil

Colours

Black (BLK) / Brown (BRN) / White (WHT)

Order codes

RED11308 + /Colour eg. RED11308/BLK (Black)



Dimensions

**NORFAST**

NORSOUND BY NORSEAL

**Application**

Around the head and jambs of fire resisting, acoustic and smoke control doorsets

Fixing

Self-adhesive

PerformanceFire resistance in accordance with BS EN 1634-1
Smoke tested in accordance with BS 476-31
Acoustically tested in accordance with BS EN 10140-2**Material**

Flexible and rigid PVC, Graphite

Length (mm)

2100

Colours

Black (BLK) / Brown (BRN) / White (WHT) / Grey (GRY)

Order codes

Single Doorsets = NORFAST/SDS/ + Colour eg. NORFAST/SDS/BLK (Black)

Double Doorsets = NORFAST/DDS/ + Colour eg. NORFAST/DDS/BLK (Black)



Dimensions

**CORNER SEAL**

NORSEAL

**Application**

Around the head and jambs of acoustic doorsets

Fixing

Self-adhesive

Performance

Acoustically tested in accordance with BS EN ISO 10140-2

Material

Flexible and rigid PVC

Length (mm)

2100

Sizes (mm)

10x10 (1010), 12x12 (1212)

Colours

Black (BK) / Brown (B) / White (W)

Order codes

DF+ size + Colour eg. DF1010BK (Black)



Dimensions



LAS1212

LORIENT

**Application**

Around the head and jambs of acoustic and smoke control doorsets

Fixing

Self-adhesive

Performance

Smoke tested in accordance with BS 476-31.1 and BS EN 1634-3
Acoustically tested in accordance with BS EN ISO 10140-2
Certifire CF5179

Material

Flexible and rigid PVC

Length (mm)

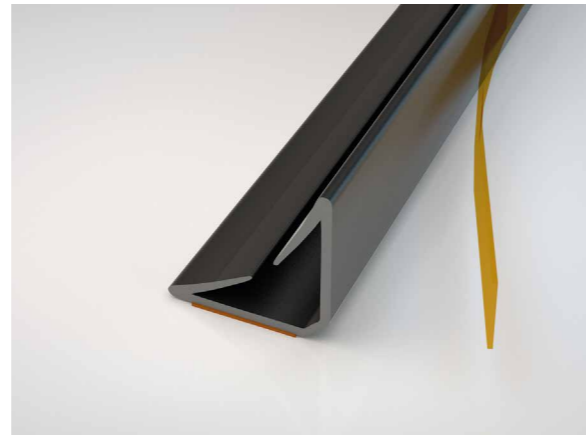
2100

Colours

Black (**BLK**) / Brown (**LBR**) / White (**WHT**) / Grey (**GRY**)

Order codes

LAS1212/2100/ + Colour
eg. **LAS1212/2100/BLK** (Black)

**Dimensions****LAS1206**

LORIENT

**Application**

Around the head and jambs of acoustic doorsets

Fixing

Self-adhesive

Performance

Acoustically tested in accordance with BS EN ISO 10140-2
Meets smoke requirements BS 9999

Material

Flexible and rigid PVC

Length (mm)

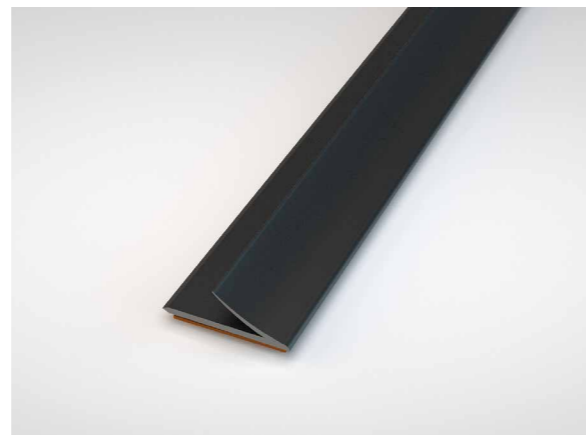
2100

Colours

Black (**BLK**) / Brown (**LBR**) / White (**WHT**) / Grey (**GRY**)

Order codes

LAS1206/2100/ + Colour
eg. **LAS1206/2100/BLK** (Black)

**Dimensions****LAS1011**

LORIENT

**Application**

Around the head, jambs and at meeting stiles of acoustic and smoke control doorsets

Fixing

Kerf-fit

Performance

Smoke tested in accordance with BS 476-31.1
Meets smoke requirements BS 9999
Acoustically tested in accordance with BS EN ISO 10140-2
Certifire CF5179
Tested up to 40 dBRw

Material

Flexible and rigid PVC

Length (mm)

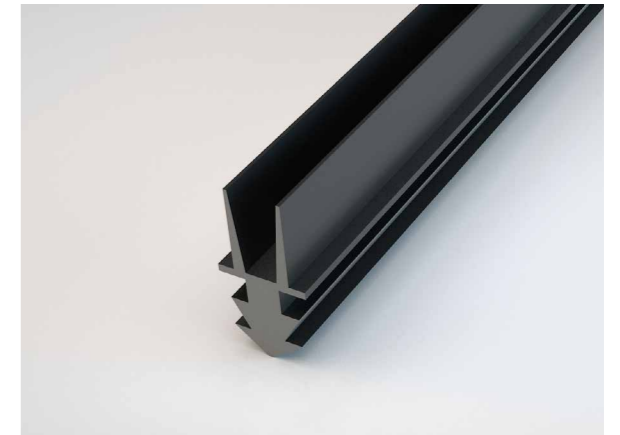
2100

Colour

Black

Order code

LAS1011/210/BLK

**Dimensions****BLIZZARD RANGE**

SEALMASTER

**Application**

Around the head and jambs of acoustic doorsets and windows

Fixing

Screw-fixed

Performance

Designed to accommodate mitred joining (SA/SB)
Ideal where sections require butt jointing (SC/SD)

Material

Aluminium, Neoprene gasket

Lengths (mm)

1000, 2100

Colours

Silver (**S**) / Gold (**G**)

**Order codes**

Holder + Colour + /Seal style + -Length
eg. **SAS/089-1** (SA, Silver, 089, 1000mm)

SA + 089	SA + 097	SB + 089	SB + 097	SC + 093	SC + 094	SD + 093	SD + 094
21	21	21	21	16	16	16	16
6	6	6	6	6	6	6	6

NOR510

NORSOUND BY NORSEAL



Application

At the meeting stile of acoustic doorsets

Fixing

Screw-fixed

Performance

Acoustically tested in accordance with BS EN ISO 10140-2

Material

Aluminium, PVC gasket

Length (mm)

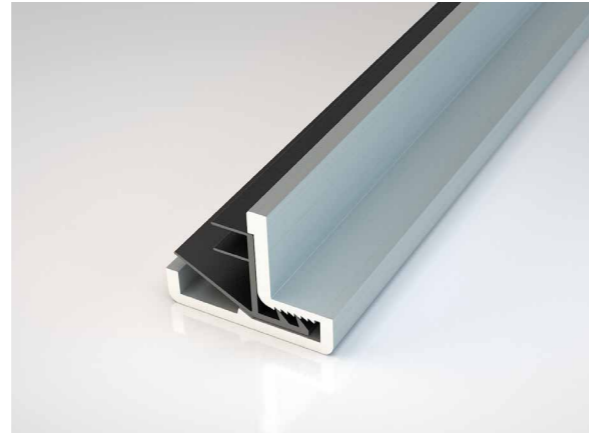
2100

Colour

Satin Silver, Black gasket

Order code

NOR510-2100



Dimensions



TT SERIES

SEALMASTER



Application

At the meeting stile of acoustic doorsets

Fixing

Screw-fixed

Material

Aluminium, Neoprene gasket

Lengths (mm)

1000, 1500, 2100
Other lengths on application

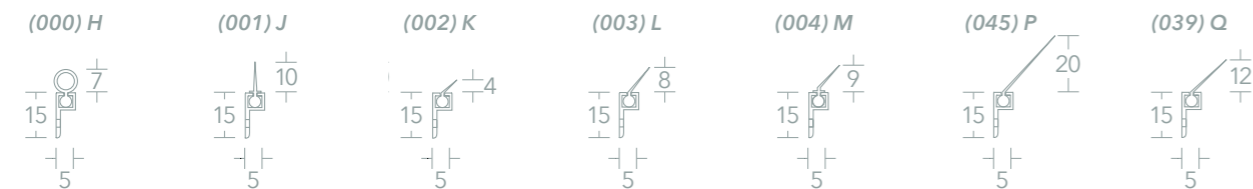
Colour

Satin Silver, Black gasket

Order codes

TT + Seal style + -Length

eg. TTH-1000 ((000) H, 1000mm)



TEMPEST

SEALMASTER



SK / SL

Application

At the meeting stile of acoustic doorsets
Suitable for situations where control of smoke, gas and air leakage is important

Fixing

Screw-fixed

Material

Aluminium, Neoprene gasket

Lengths (mm)

1000, 2100
Other lengths on application

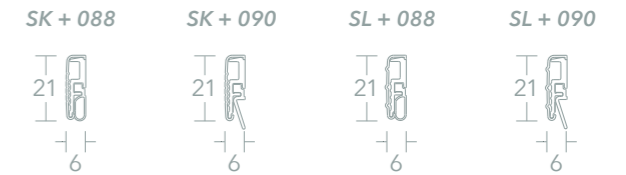
Colour

Satin Silver, Black gasket

Order codes

Holder + Colour + /Seal style + -Length

eg. SKS/088-1 (SK, Silver, 088, 1000mm)



TYPHOON

SEALMASTER



SM

Application

At the meeting stile of acoustic doorsets

Fixing

Screw-fixed

Material

Aluminium, Neoprene gasket

Lengths (mm)

1000, 2100

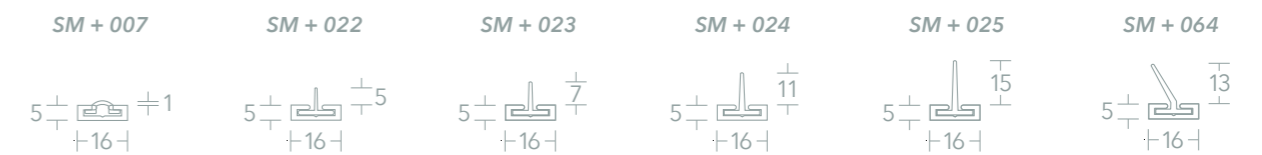
Colour

Satin Silver, Black gasket

Order codes

Holder + Colour + /Seal style + -Length

eg. SMS/007-2.1 (SM, Silver, 007, 2100mm)



NOR810®

NORSOUND BY NORSEAL



Application

Bottom edge of acoustic timber doorsets

Fixing

Rebated, held in place with end caps

Performance

Suitable for use on most fire doors
Compliant with BS 476-22
UL Approval
Smoke tested in accordance with BS 476-31.1
Acoustically tested in accordance with
BS EN ISO 10140-2
Certifire CF629
1,000,000 cycle tested

Material

Aluminium, Silicone gasket

Standard lengths (mm)

320, 435, 535, 635, 735, 835, 935, 1035, 1135, 1235, 1335, 1435, 1535

Minimum / Maximum length (mm)

320 / 1700

Gap coverage (mm)

20

Actuation

Single

Cutback (mm)

Various, >100, 320 limited to 85

Colour

Mill finish, Grey gasket

Order codes

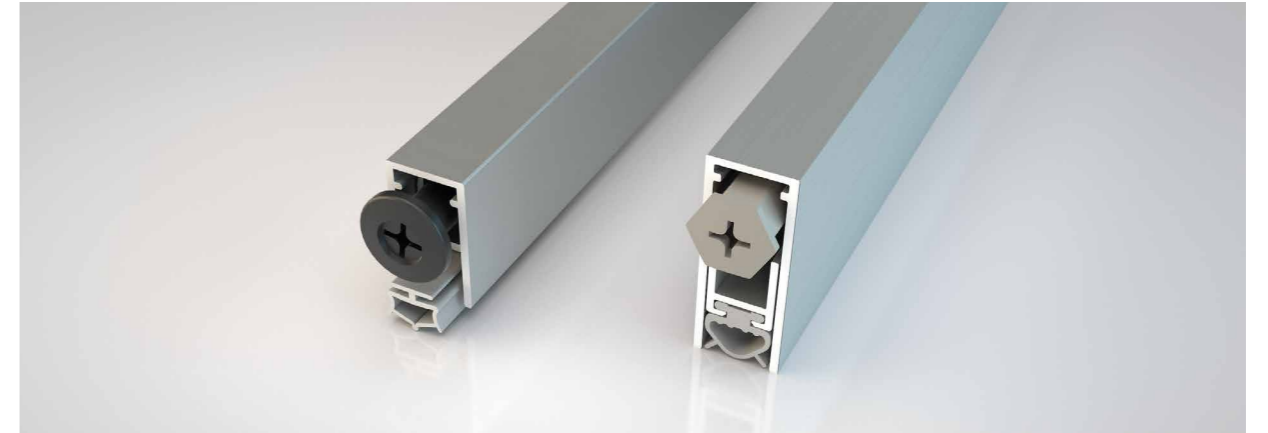
NOR810 + Length eg. **NOR810320** (320mm)

Dimensions



NOR810S / NOR810S+

NORSOUND BY NORSEAL



Application

Bottom edge of acoustic timber doorsets

Fixing

Rebated, screw fixed

Performance

Suitable for use on most fire doors
Meets smoke requirements BS 8214

Material

Aluminium, TPE gasket

Actuation

Single

Colour

Mill finish, Grey gasket

NOR810S

Dimensions



Lengths (mm)

325, 425, 525, 625, 725, 825, 925, 1025, 1125, 1225

Maximum length (mm)

1225

Gap coverage (mm)

12

Cutback (mm)

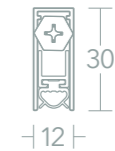
150 (425 limited to 140, 325 limited to 40)

Order codes

NOR810S + Length eg. **NOR810S325** (325mm)

NOR810S+

Dimensions



Lengths (mm)

325, 425, 525, 625, 725, 825, 925, 1025, 1125, 1225, 1325

Maximum length (mm)

1325

Gap coverage (mm)

15

Cutback (mm)

125 (425 limited to 105)

Order codes

NOR810S+ + Length eg. **NOR810S+325** (325mm)

NOR850

NORSOUND BY NORSEAL

**Application**

Bottom edge of acoustic timber doorsets

Fixing

Screw fixed

Performance

Smoke tested in accordance with BS 476-31.1
Acoustically tested in accordance with BS EN ISO 10140-2

Material

Aluminium, PVC gasket

Lengths (mm)

1000, 1500

Maximum gap coverage (mm)

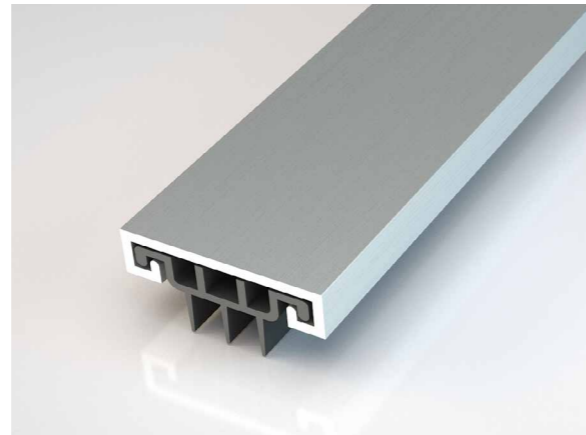
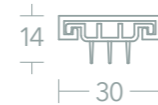
6

Colour

Satin Silver, Black gasket

Order codes

NOR850- + Length eg. NOR850-1000 (1000mm)

**Dimensions****NOR855**

NORSOUND BY NORSEAL

**Application**

Bottom edge of acoustic timber doorsets

Fixing

Screw fixed

Performance

Acoustically tested in accordance with BS EN ISO 10140-2

Material

Aluminium, PVC gasket

Lengths (mm)

1000, 2100

Maximum gap coverage (mm)

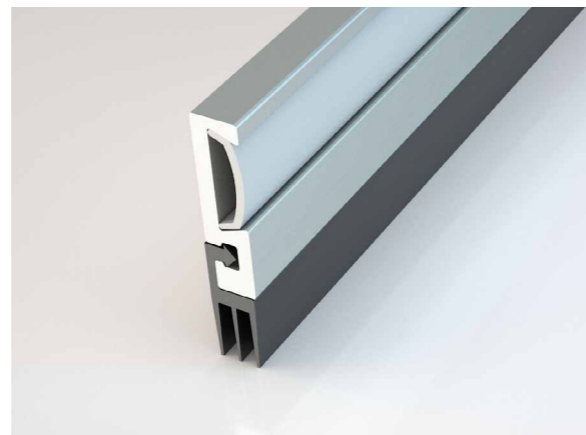
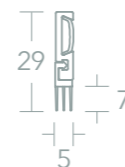
6

Colour

Satin Silver, Black gasket

Order codes

NOR855- + Length eg. NOR855-1000 (1000mm)

**Dimensions****SCHALL-EX L-15**

ATHMER

**Application**

Bottom edge of acoustic timber doorsets

Fixing

Rebated, held in place with angle brackets

Performance

Smoke tested in accordance with BS 476-31.1
Acoustically tested in accordance with BS EN ISO 10140-2
Certifire CF5675

Material

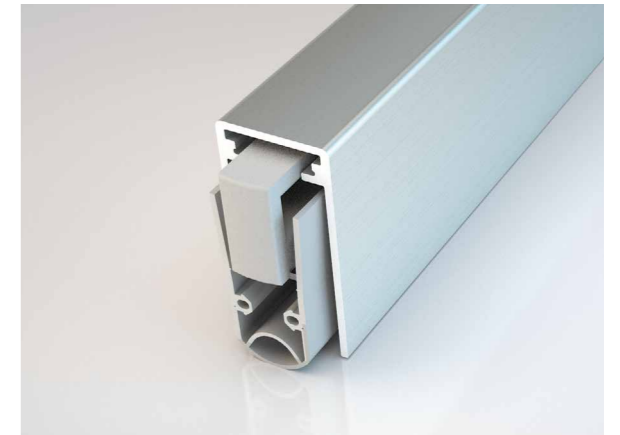
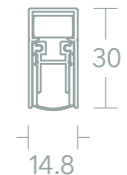
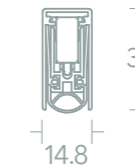
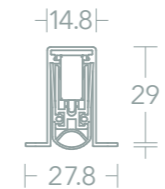
Aluminium, Silicone gasket

Cutback (mm)

125

Colour

Mill finish, Grey gasket

**SCHALL-EX L-15/30 OS****SCHALL-EX L-15/30 WS****SCHALL-EX DUO L-15 WS****Standard lengths (mm)**

708, 833, 958, 1083

Minimum / Maximum length (mm)

235 / 2210

Maximum gap coverage (mm)

20

Actuation

Single actuation

Order codes**1-881- + Length (4 digits)**

eg. 1-881-0708 (708mm)

Other lengths available on application

Standard lengths (mm)

708, 833, 958, 1083

Minimum / Maximum length (mm)

235 / 2000

Maximum gap coverage (mm)

14

Actuation

Single actuation

Order codes**1-880- + Length (4 digits)**

eg. 1-880-0708 (708mm)

Other lengths available on application
Option for flush bolt integration**Standard lengths (mm)**

708, 833, 958, 1083

Minimum / Maximum length (mm)

708 / 1600

Maximum gap coverage (mm)

14

Actuation

Double actuation

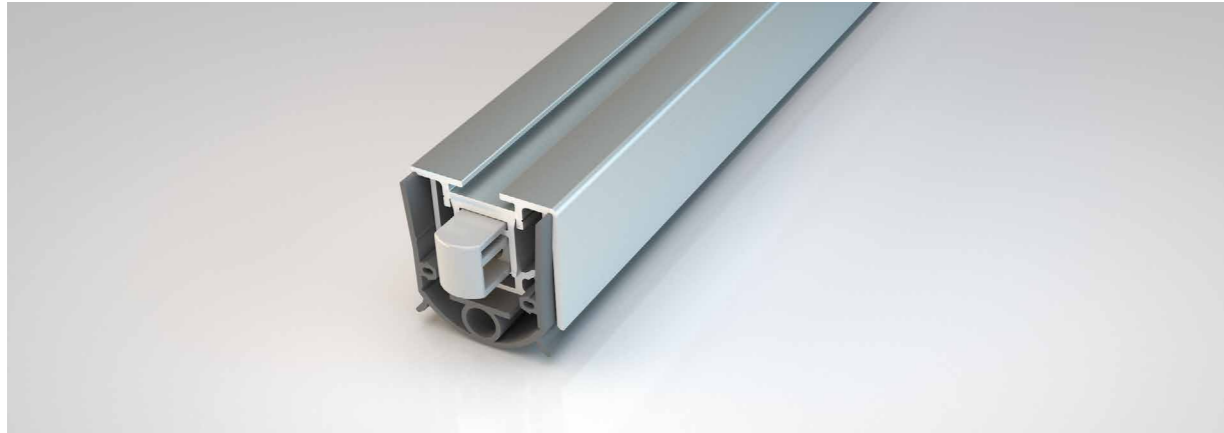
Order codes**1-382- + Length (4 digits)**

eg. 1-382-0708 (708mm)

Other lengths available on application

RAINSTOP L24/20 WS

ATHMER

**Application**

Bottom edge of external timber, metal and composite doorsets

Fixing

Rebated, held in place with angle brackets

Performance

Resistance to driving rain (classification 7A) in accordance with EN 12208
Resistance to wind load (classification C2/Bs) in accordance with EN 12210
Barrier free, no threshold required
Resistance to air permeability (Classification 4) in accordance with EN 12207
Sound reduction up to 54dB

Material

Aluminium, Silicone gasket

Standard lengths (mm)

750, 900, 1050, 1200

Minimum / Maximum length (mm)

230 / 2000

Gap coverage (mm)

16

Actuation

Single

Cutback (mm)

150

Colour

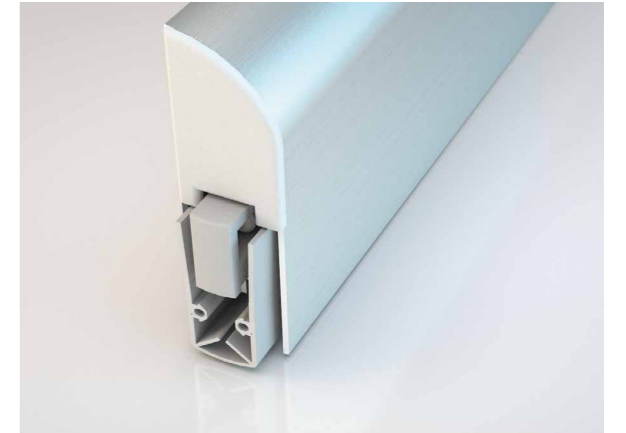
Mill finish, Grey gasket

Order codes

1-955- + Length (4 digits) eg. 1-932-0750 (750mm)

Dimensions**SCHALL-EX L-15 FS**

ATHMER

**Application**

Bottom edge of acoustic timber or metal doorsets

Fixing

Screw-fixed

Performance

Smoke tested in accordance with BS 476-31.1
Acoustically tested in accordance with BS EN ISO 10140-2
Certifire CF5675

Material

Aluminium, Silicone gasket

Standard lengths (mm)

805, 930, 1055

Minimum / Maximum length (mm)

235 / 2335

Cutback (mm) / Maximum gap coverage (mm)

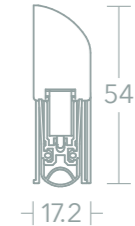
125 / 20

Actuation

Single

Colour

Satin Silver, Grey gasket

Dimensions**Order codes**

1-884- + Length (4 digits) eg. 1-884-0805 (805mm)

NOR815

NORSOUND BY NORSEAL

**Application**

Bottom edge of acoustic timber or metal doorsets

Fixing

Screw-fixed

Performance

Draught exclusion and acoustic performance
Meets smoke requirements BS 8214

Material

Aluminium (Satin Silver), PVC gasket (Grey)

Maximum gap coverage (mm)

17

Cutback (mm)

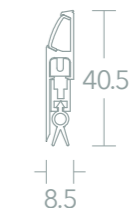
300 (150 from each end)

Actuation

Single

Order code

NOR815-915 (915mm length)

**Dimensions**

NOR820

NORSOUND BY NORSEAL

**Application**

Bottom edge of acoustic timber or metal doorsets

Fixing

Screw-fixed

Performance

Meets smoke requirements BS 8214
Acoustically tested in accordance with
BS EN ISO 10140-2

Material

Aluminium (Satin Silver), PVC gasket (Grey)

Lengths (mm)

400, 500, 600, 700, 800, 900, 1000, 1100, 1200

Cutback (mm) / Maximum gap coverage (mm)

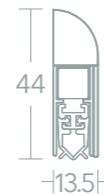
125, 130 (400 length only) / 12

Actuation

Single

Order codes

NOR820 + Length + /S eg. NOR820400/S (400mm)

**Dimensions****SCHALL-EX L-15/30 WS PIVOT**

ATHMER

**Application**

Bottom edge of acoustic timber doorsets with a pivot hinge. Suitable for double swing pivot doors

Fixing

Rebated, held in place with angle brackets

Performance

Smoke tested in accordance with BS 476-31.1
Acoustically tested in accordance with
BS EN ISO 10140-2

Material

Aluminium, Silicone gasket

Standard lengths (mm)

708, 833, 958, 1083, 1208

Minimum / Maximum length (mm)

235 / 2000

Cutback (mm) / Maximum gap coverage (mm)

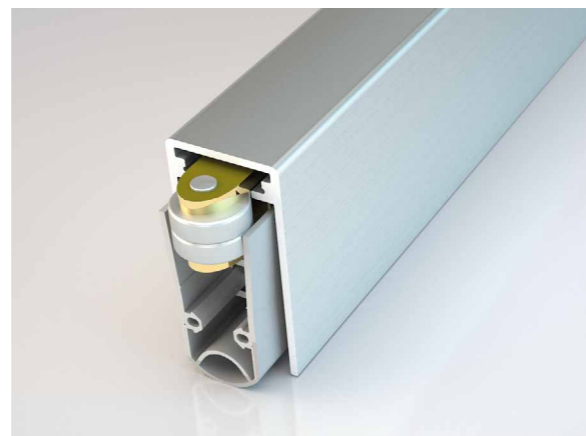
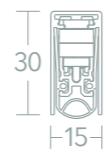
125 / 20

Actuation

Single

Colour

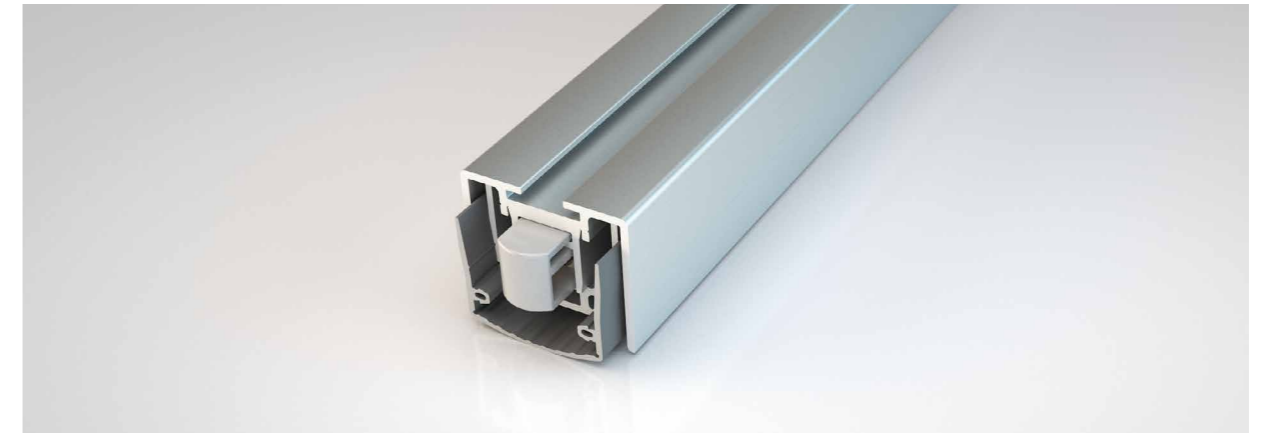
Mill finish, Grey gasket

**Dimensions****Order codes**

1-964- + Length (4 digits) eg. 1-946-0708 (708mm)

STADI LD-24/20 WS

ATHMER

**Application**

Bottom edge of acoustic metal doorsets

Fixing

Rebated, held in place with angle brackets

Performance

Acoustically tested in accordance with
BS EN ISO 10140-2
Delayed action drop

Material

Aluminium (Mill finish), Silicone gasket (Grey)

Standard lengths (mm)

750, 900, 1050, 1200

Minimum / Maximum length (mm)

635 / 1600

Maximum gap coverage (mm)

16

Cutback (mm)

150

Actuation

Single

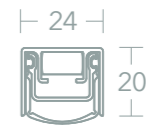
Order codes

1-951- + Length (4 digits) eg. 1-951-0750 (750mm)

Other lengths available on application

Delayed action drop

To avoid pressurisation when closing the door, selected Stadi's are available with an optional mechanism, which delays the dropping of the seal. A combination of damping cylinder and spring extends the closing time of the seal to around 6 to 8 seconds. This means that air can be dispelled during this time, making the door suitable for airlock situations. When opened, the seal moves up again quickly without needlessly rubbing against the floor.

Dimensions

STADI L-24/20

ATHMER

**Application**

Bottom edge of acoustic metal doorsets

Performance

Smoke tested in accordance with BS 476-31.1
Acoustically tested in accordance with BS EN ISO 10140-2
Certifire CF5675
Option for flush bolt integration

Material

Aluminium (Mill finish), Silicone gasket (Grey)

Standard lengths (mm)

750, 900, 1050, 1200

Minimum / Maximum length (mm)

250 / 2000

Maximum gap coverage (mm)

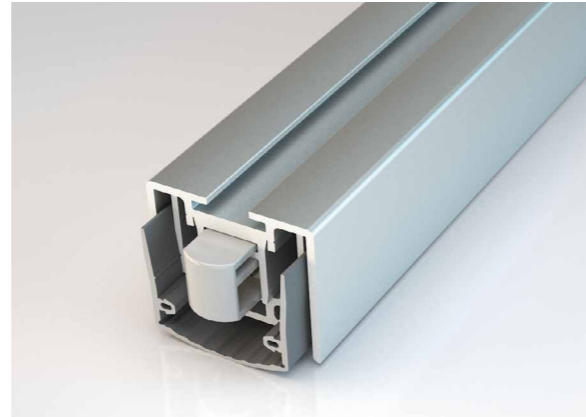
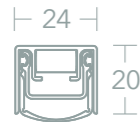
16

Actuation

Single

Cutback (mm)

150

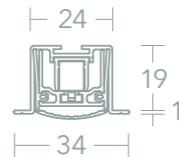
**STADI L-24/20 WS****Fixing**

Rebated, held in place with angle brackets

Order codes**1-603- + Length (4 digits)**

eg. 1-603-0750 (750mm)

Other lengths available on application

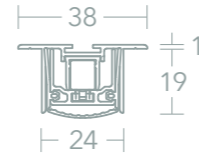
STADI L-24/20 OS**Fixing**

Screw-fixed

Order codes**1-605- + Length (4 digits)**

eg. 1-605-0750 (750mm)

Other lengths available on application

STADI L-24/20 TS**Fixing**

Screw-fixed

Order codes**1-607- + Length (4 digits)**

eg. 1-607-1050 (1050mm)

Other lengths available on application

FLUSH BOLT

ATHMER

**Application**

Meeting stiles of timber and metal doorsets

Fixing

Screw-fixed

Material

Stainless Steel

Length (mm)

250

Maximum Gap Coverage

8mm diameter bolt, 15mm throw

TK-15/BXL Flush Bolt**Performance**

Fitted to the bottom of meeting stiles
Can be prepared for use with certain Athmer drop seals
Adjustable bolt height

Order code

1792

TK-15/T Flush Bolt**Performance**

Fitted to the top of meeting stiles
Matches with TK-15/BXL at bottom of door
Adjustable bolt height

Order code

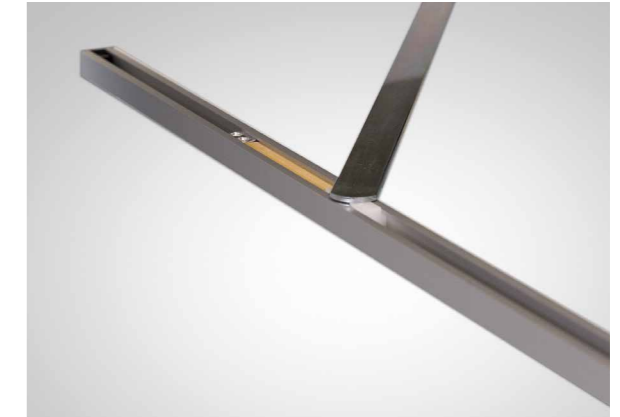
1653

Available for integration with the following seals:

Schall-Ex L-15/30 WS, Stadi L-24/20 WS,
Stadi L-24/20 OS, Stadi L-24/20 TS

PORTI®

ATHMER

**Application**

Timber and metal framed, timber doorsets

Fixing

Screw-fixed

Performance

Suitable for retrofitting
Max opening angle 120 degrees
Endurance tested - DIN EN 13126-5: Class 4
Maximum door leaf weight 65kg
(model dependent - see below)

Material

Aluminium body, Stainless Steel arm

Door Leaf Width 720 - 1110 mm**Frame / Weight of Door Leaf / Order Code**Metal/Hardwood* / 30KG / **5312**Hardwood/Softwood/MDF / 65KG / **5489**Metal* / 65KG / **5371****Door Leaf Width 610 - 719 mm****Frame / Weight of Door Leaf / Order Code**Metal/Hardwood* / 30KG / **5313**Hardwood/Softwood/MDF / 65KG / **5465**Metal* / 65KG / **5379**

*Retrofitting only suitable on these models.

7. THRESHOLD PLATES

A range of stylish, low profile aluminium threshold plates providing an even surface to seal against at the bottom of a door, whilst also covering the gap between different floor surfaces. Approved Document M compliant, these threshold plates come in a variety of widths for applying to both solid floors and against carpet.

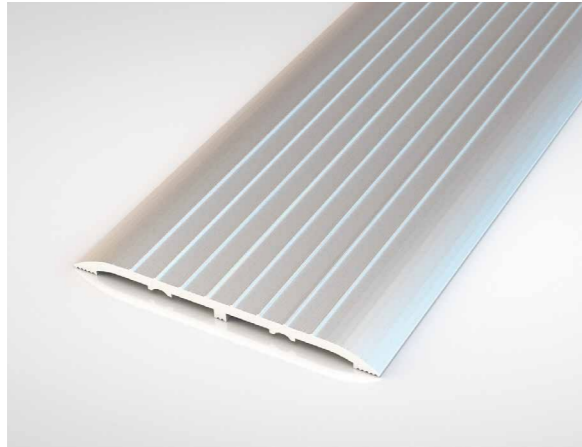
Contents

Threshold Plates 72-73



NOR615 / NOR620 / NOR625 / NOR630

NORSOUND BY NORSEAL

**Application**

At the threshold of doorsets

Fixing

Bonded with adhesive (not supplied) or screw-fixed

PerformanceComplies to Approved Document M
AA10 finish**Material**

Aluminium

Lengths (mm)

1000, 2100

Colour

Satin Silver

NOR615**Order codes****Plate only = NOR615- + Length**

eg. NOR615-1000 (1000mm)

With fixings = NOR615- + Length + /FX

eg. NOR615-2100/FX (2100mm)

NOR625**Order codes****Plate only = NOR625- + Length**

eg. NOR625-1000 (1000mm)

With fixings = NOR625- + Length + /FX

eg. NOR625-2100/FX (2100mm)

NOR620**Order codes****Plate only = NOR620- + Length**

eg. NOR620-1000 (1000mm)

With fixings = NOR620- + Length + /FX

eg. NOR620-2100/FX (2100mm)

NOR630**Order codes****Plate only = NOR630- + Length**

eg. NOR630-1000 (1000mm)

With fixings = NOR630- + Length + /FX

eg. NOR630-2100/FX (2100mm)

NOR650

NORSOUND BY NORSEAL

**Application**

At the threshold of acoustic doorsets

Fixing

Bonded with adhesive (not supplied) or screw-fixed

PerformanceComplies to Approved Document M
Acoustically tested in accordance with
BS EN ISO 10140-2
AA10 finish**Material**

Aluminium

Lengths (mm)

1000, 2100

Colour

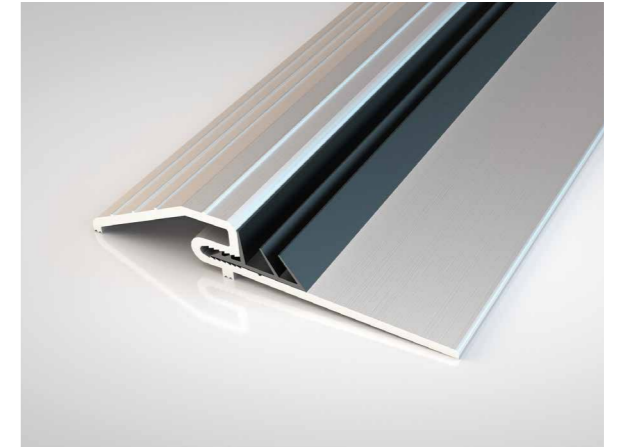
Satin Silver

Order codes**Plate only = NOR650- + Length**

eg. NOR650-1000 (1000mm)

With fixings = NOR650- + Length + /FX

eg. NOR650-2100/FX (2100mm)

**Dimensions****NOR695**

NORSOUND BY NORSEAL

**Application**At the threshold of doorsets, between carpeted
and non-carpeted area**Fixing**

Bonded with adhesive (not supplied) or screw-fixed

PerformanceComplies to Approved Document M
AA10 finish**Material**

Aluminium

Lengths (mm)

1000, 2100

Colour

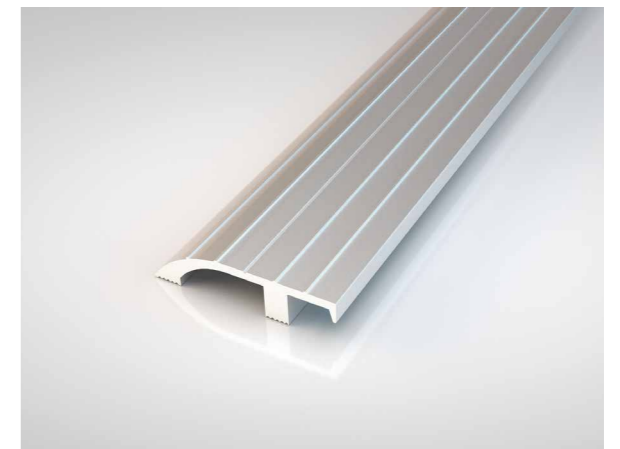
Satin Silver

Order codes**Plate only = NOR695- + Length**

eg. NOR695-1000 (1000mm)

With fixings = NOR695- + Length + /FX

eg. NOR695-2100/FX (2100mm)

**Dimensions**

8. SLIDING DOOR SEALS

Acoustic sealing solutions specifically designed for timber sliding doors, with door bottom sealing available in concealed or surface-mounted options.

Complete sealing solutions for latched and unlatched sliding door applications combine door bottom with suitable perimeter sealing to provide smoke, acoustic and draught protection whilst maintaining full accessibility.

Contents

Sliding Door Seals 76-79



COMPLETE SEALING SYSTEM

ATHMER



VHH SLIDE M-12

Application

Sliding timber acoustic doors

Fixing

Rebated

Material

Aluminium housing, Silicone gasket

Lengths (mm)

708, 833, 958, 1083, 1208

Other sizes available on application

Maximum length (mm)

1958

Maximum gap coverage (mm)

11

Actuation

Single

Cutback (mm)

125

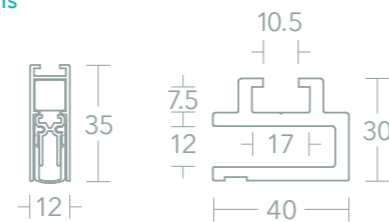
Orientation

Unhanded, reversible

Colour

Mill finish

Dimensions



Order codes

1-839- + Length (4 digits)

eg. 1-839-0708 (708mm)



M-12 UNIVERSAL

Application

Sliding timber acoustic doors

Fixing

Screw-fix

Material

Aluminium housing, Silicone gasket

Lengths (mm)

708, 833, 958, 1083, 1208

Other sizes available on applications

Maximum length (mm)

1958

Maximum gap coverage (mm)

11

Actuation

Single

Cutback (mm)

450

Orientation

Unhanded, reversible

Colour

Mill finish

Order code

For more information visit norseal.co.uk

M-12 Universal for Glass Doors available, please go to Glass Door Seals section (page 87).

SCHALL-EX SLIDE M-12 WS

ATHMER



Application

Bottom edge of sliding timber acoustic doors

Fixing

Rebated

Lengths (mm)

708, 833, 958, 1083, 1208

Other sizes available on application

Maximum length (mm)

1958

Maximum gap coverage (mm)

11

Actuation

Single

Cutback (mm)

125

Orientation

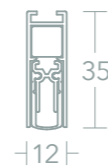
Unhanded, reversible

Colour / Material

Mill finish / Aluminium housing, Silicone gasket.



Dimensions



Order codes

1-548- + Length (4 digits) eg. 1-548-0708 (708mm)

MAGNET ACCESSORY

ATHMER

Application

Sliding doors

Fixing

Recessed, screw fix

Performance

Discreet mechanism used to hold sliding doors closed

Holding force circa 70N (newtons)

Number of required magnets dependent on door weight

Delivered with metal plate

Material

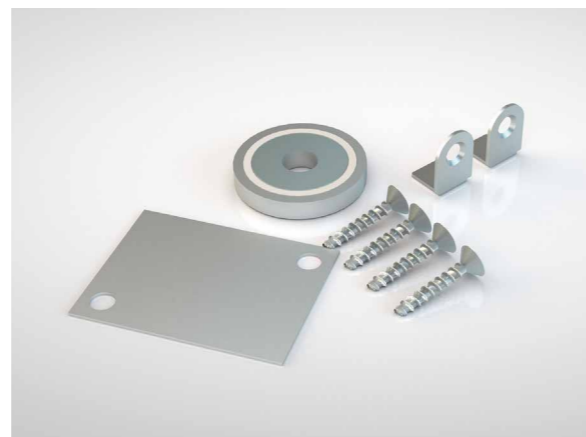
Magnet

Colour

Silver

Order code

5118



SCHALL-EX SLIDE APPLIC A

ATHMER



Application

Bottom edge of sliding timber acoustic doors

Fixing

Screw-fixed

Lengths (mm)

805, 930, 1055

Other sizes available on application

Maximum length (mm)

1605

Maximum gap coverage (mm)

11

Actuation

Single

Cutback (mm)

125

Orientation

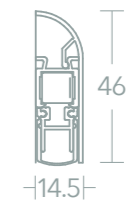
Unhanded, reversible

Colour / Material

C 0 Silver Anodised / Aluminium housing, Silicone gasket. Other finishes on application



Dimensions



Order codes

1-717- + Length (4 digits) eg. 1-717-0805 (805mm)

ZD SLIDE-12/12

ATHMER



Application

Vertical edge of sliding timber acoustic doors

Fixing

Kerf-fit

Material

Silicone

Length

Per metre

Maximum gap coverage (mm)

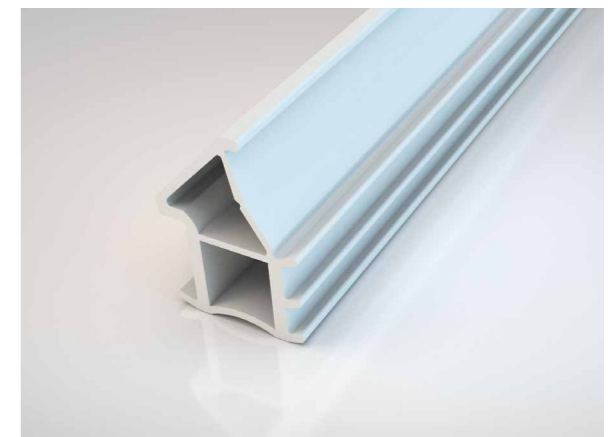
11

Colour

Grey

Order code

210 (Per metre / Grey)



Dimensions



9. GLASS DOOR SEALS

A range of integrated and surface-mounted automatic drop seals for glass doors. Designed to complement existing glass door furniture, providing a visually appealing, acoustic sealing solution. Options available for hinged and sliding glass door applications.

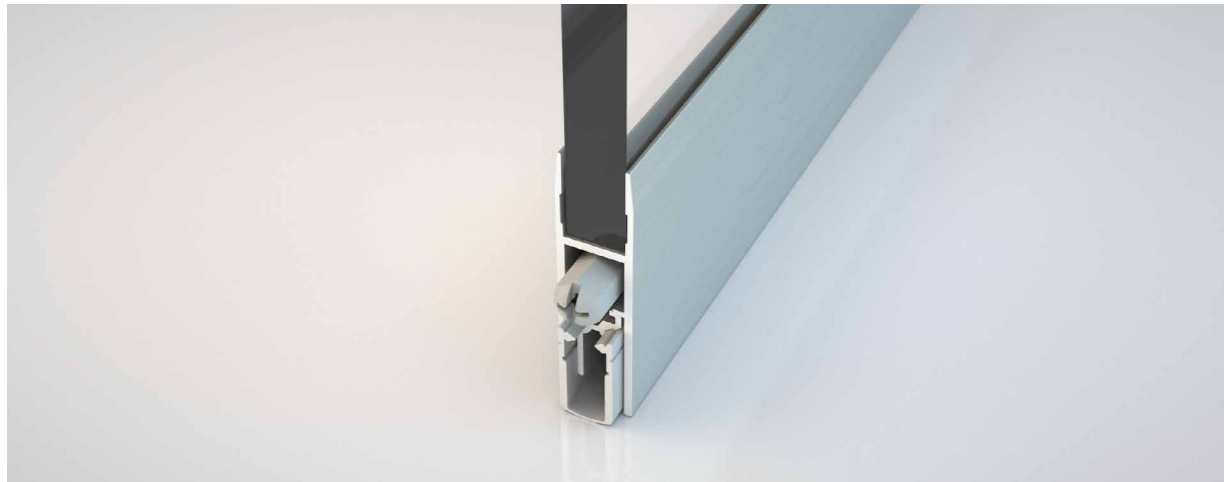
Contents

Glass Door Bottom Seals	82-85
Glass Sliding Door Seals	85-87
Glass Door Seals	88-91



SCHALL-EX GS-H RANGE

ATHMER



Application

Bottom edge of hinged glass acoustic doors

Fixing

Bonded with adhesive (not supplied)

Material

Aluminium housing, Silicone gasket

Lengths (mm)

708, 833, 958, 1083, 1208

Cutback (mm)

125

Orientation

Unhanded, reversible

Colours

C 0 Silver Anodised / C 31 Stainless Steel-coloured Anodised

SCHALL-EX GS-H8 - Single actuation SCHALL-EX DUO GS-H8 - Double actuation

Glass thickness (mm)

8

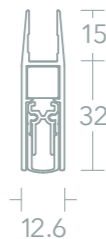
Maximum gap coverage (mm)

11

Maximum length (mm)

1335

Dimensions



Order codes

GS-H8 - Silver
1-415- + Length (4 digits) eg. 1-415-0708 (708mm)

GS-H8 - Stainless Steel
1-675- + Length (4 digits) eg. 1-675-0708 (708mm)

DUO GS-H8 - Silver
1-416- + Length (4 digits) eg. 1-416-0708 (708mm)

DUO GS-H8 - Stainless Steel
1-674- + Length (4 digits) eg. 1-674-0708 (708mm)

SCHALL-EX GS-H8/12 - Single actuation

Glass thickness (mm)

8 - 12

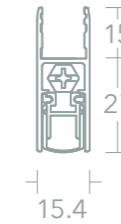
Maximum gap coverage (mm)

12

Maximum length (mm)

1335

Dimensions



Order codes

GS-H8/12 - Silver
1-817- + Length (4 digits) eg. 1-817-0708 (708mm)

GS-H8/12 - Stainless Steel
1-818- + Length (4 digits) eg. 1-818-0708 (708mm)

SCHALL-EX GS-H10 - Single actuation SCHALL-EX DUO GS-H10 - Double actuation

Glass thickness (mm)

10

Maximum gap coverage (mm)

11

Maximum length (mm)

1335

Dimensions



Order codes

GS-H10 - Silver
1-453- + Length (4 digits) eg. 1-453-0708 (708mm)

GS-H10 - Stainless Steel
1-677- + Length (4 digits) eg. 1-677-0708 (708mm)

DUO GS-H10 - Silver
1-454- + Length (4 digits) eg. 1-454-0708 (708mm)

DUO GS-H10 - Stainless Steel
1-676- + Length (4 digits) eg. 1-676-0708 (708mm)

SCHALL-EX GS-H20 - Single actuation SCHALL-EX DUO GS-H20 - Double actuation

Glass thickness (mm)

20

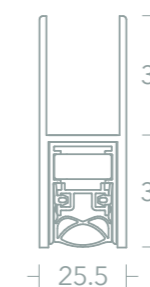
Maximum gap coverage (mm)

12

Maximum length (mm)

GS-H20 - 2000
 DUO GS-H20 - 1500

Dimensions



Order codes

GS-H20 - Silver
1-439- + Length (4 digits) eg. 1-439-0708 (708mm)

DUO GS-H20 - Silver
1-440- + Length (4 digits) eg. 1-440-0708 (708mm)

SCHALL-EX GS RANGE

ATHMER



Application

Bottom edge of hinged glass acoustic doors

Fixing

Bonded with adhesive (not supplied)

Material

Aluminium housing, Silicone gasket

Lengths (mm)

708, 833, 958, 1083, 1208

Cutback (mm)

125

Orientation

Unhanded, reversible

Colours

C 0 Silver Anodised / C 31 Stainless Steel-coloured Anodised

SCHALL-EX GS-8 - Single actuation SCHALL-EX DUO GS-8 - Double actuation

Glass thickness (mm)

8

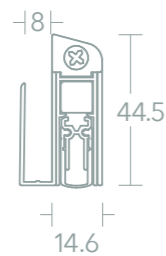
Maximum gap coverage (mm)

11

Maximum length (mm)

1335

Dimensions



Order codes

GS-8 - Silver
1-407- + Length (4 digits) eg. 1-407-0708 (708mm)

GS-8 - Stainless Steel
1-671- + Length (4 digits) eg. 1-671-0708 (708mm)

DUO GS-8 - Silver
1-408- + Length (4 digits) eg. 1-408-0708 (708mm)

DUO GS-8 - Stainless Steel
1-670- + Length (4 digits) eg. 1-670-0708 (708mm)



SCHALL-EX GS-10 - Single actuation SCHALL-EX DUO GS-10 - Double actuation

Glass thickness (mm)

10

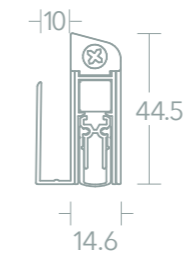
Maximum gap coverage (mm)

11

Maximum length (mm)

1335

Dimensions



Order codes

GS-10 - Silver
1-592- + Length (4 digits) eg. 1-592-0708 (708mm)

GS-10 - Stainless Steel
1-673- + Length (4 digits) eg. 1-673-0708 (708mm)

DUO GS-10 - Silver
1-593- + Length (4 digits) eg. 1-439-0708 (708mm)

SCHALL-EX GS-A - Single actuation

Glass thickness (mm)

≥6

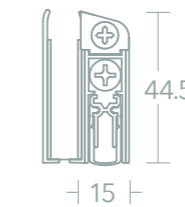
Maximum gap coverage (mm)

11

Maximum length (mm)

1333

Dimensions



Order codes

GS-A - Silver
1-814- + Length (4 digits) eg. 1-814-0708 (708mm)

GS-A - Stainless Steel
1-815- + Length (4 digits) eg. 1-815-0708 (708mm)

SCHALL-EX SLIDE GS RANGE - Single actuation

Application

Bottom edge of sliding glass acoustic doors

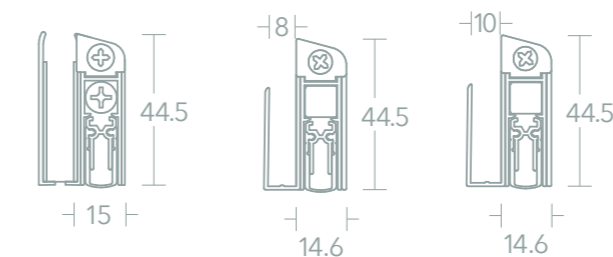
Maximum gap coverage (mm)

11

Maximum length (mm)

1958

Dimensions



SCHALL-EX SLIDE GS-A

SCHALL-EX SLIDE GS-8

SCHALL-EX SLIDE GS-10

Order codes

SCHALL-EX SLIDE GS-A - Silver
1-875- + Length (4 digits) eg. 1-875-0708 (708mm)

SCHALL-EX SLIDE GS-A - Stainless Steel
1-876- + Length (4 digits) eg. 1-876-0708 (708mm)

SCHALL-EX SLIDE GS-8 - Silver
1-566- + Length (4 digits) eg. 1-566-0708 (708mm)

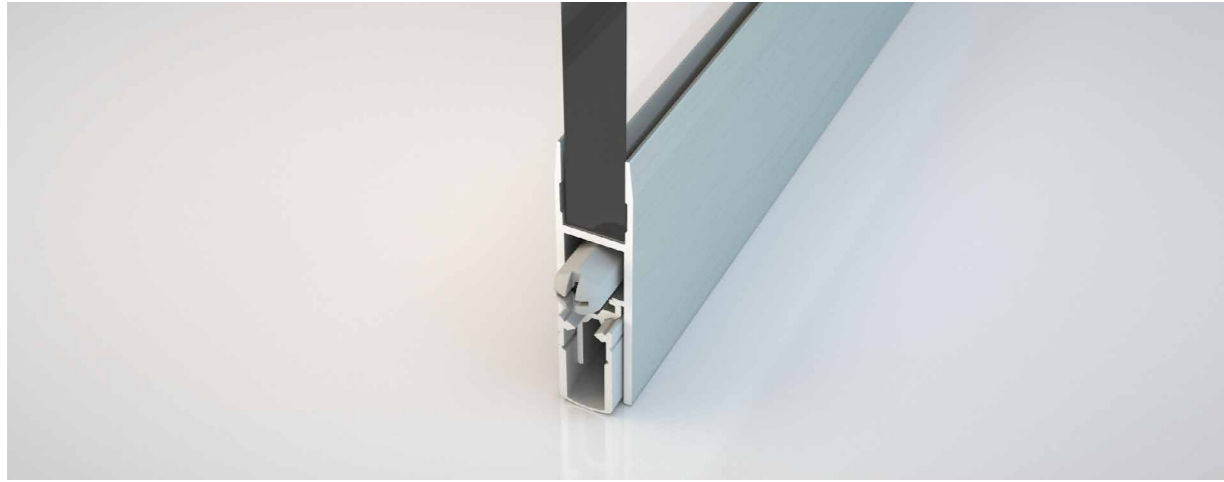
SCHALL-EX SLIDE GS-8 - Stainless Steel
1-678- + Length (4 digits) eg. 1-678-0708 (708mm)

SCHALL-EX SLIDE GS-10 - Silver
1-584- + Length (4 digits) eg. 1-584-0708 (708mm)

SCHALL-EX SLIDE GS-10 - Stainless Steel
1-679- + Length (4 digits) eg. 1-679-0708 (708mm)

SCHALL-EX SLIDE GS-H RANGE

ATHMER



Application
Bottom edge of sliding glass acoustic doors

Fixing
Bonded with adhesive (not supplied)

Material
Aluminium housing, Silicone gasket

Lengths (mm)
708, 833, 958, 1083, 1208

Maximum gap coverage (mm)
11

Maximum length (mm)
1605

Actuation
Single

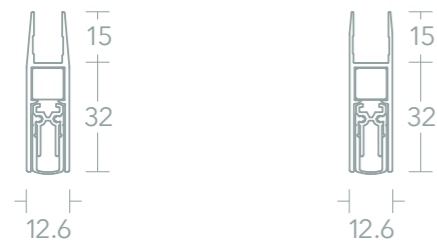
Cutback (mm)
125

Orientation
Unhanded, reversible

Colours
C 0 Silver Anodised / C 31 Stainless Steel-coloured Anodised

SCHALL-EX SLIDE GS-H

Dimensions



SCHALL-EX SLIDE GS-H8

SCHALL-EX SLIDE GS-H10

Order codes

- SCHALL-EX SLIDE GS-H8 - Silver
1-578- + Length (4 digits) eg. 1-578-0708 (708mm)
- SCHALL-EX SLIDE GS-H8 - Stainless Steel
1-680- + Length (4 digits) eg. 1-680-0708 (708mm)
- SCHALL-EX SLIDE GS-H10 - Silver
1-572- + Length (4 digits) eg. 1-572-0708 (708mm)
- SCHALL-EX SLIDE GS-H10 - Stainless Steel
1-681- + Length (4 digits) eg. 1-681-0708 (708mm)

M-12 UNIVERSAL FOR GLASS DOORS

ATHMER



Application
Bottom edge of sliding glass acoustic doors

Fixing
Bonded with adhesive (not supplied)

Material
Aluminium housing, Silicone gasket

Lengths (mm)
708, 833, 958, 1083, 1208

Maximum length (mm)
1958

Cutback (mm) / Maximum gap coverage (mm)
450 / 11

Actuation
Single

Orientation
Unhanded, reversible

Colours
C 0 Silver Anodised / C 31 Stainless Steel-coloured Anodised

Order code
For more information visit norseal.co.uk

VN SLIDE-8/10

ATHMER



Application
Vertical edge of sliding acoustic doors

Fixing
Bonded with adhesive (not supplied)

Material
Silicone

Length
Per metre

Maximum gap coverage (mm)
9

Glass thickness (mm)
8-10

Colour
Transparent

Order code
523

Dimensions



GLASDICHT UB

ATHMER



Application

Edges of glass doors

Fixing

Self-adhesive

Material

Aluminium housing, Horsehair brush

Length (mm)

2250

Glass thickness (mm)

8 or 10

Maximum gap coverage (mm)

7.5 or 10

Colour

C 0 Silver Anodised

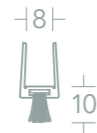
Dimensions / Order codes



4-156-005

Glasdicht UB-8/7.5
(8mm Glass)

7.5mm max gap coverage



4-156-008

Glasdicht UB-8/10
(8mm Glass)

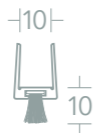
10mm max gap coverage



4-157-005

Glasdicht UB-10/7.5
(10mm Glass)

7.5mm max gap coverage



4-156-005

Glasdicht UB-10/10
(10mm Glass)

10mm max gap coverage

TYPHOON - SN

SEALMASTER



Application

Edges of glass doors (Use with SP)

Fixing

Bonded with adhesive (not supplied)

Material

Aluminium, Neoprene gasket

Lengths (mm)

1000, 2100

Glass thickness (mm)

10-12 (neoprene packing required for 10-11 glass)

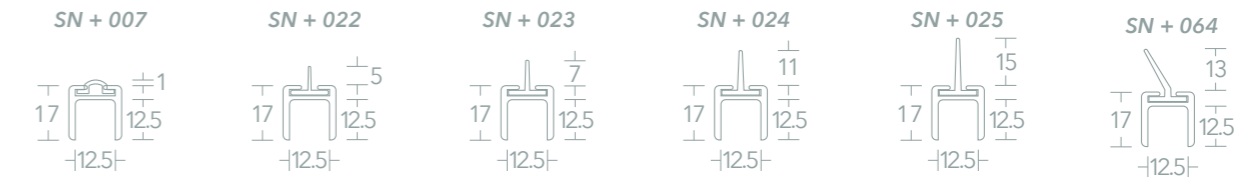
Maximum gap coverage (mm)

12 (when used with 064 blade)

Colours

Satin Silver (**S**) / Satin Gold (**G**)

Dimensions



Order codes

Holder + Colour + /Seal style + -Length

eg. SNS/007-2.1 (SN, Silver, 007, 2100mm)

TYPHOON - SP

SEALMASTER



Application

Edges of glass doors (Use with SN)

Fixing

Bonded with adhesive (not supplied)

Material

Aluminium

Length (mm)

2100

Glass thickness (mm)

10-12 (neoprene packing required for 10-11 glass)

Maximum gap coverage (mm)

2.5 protrusion.

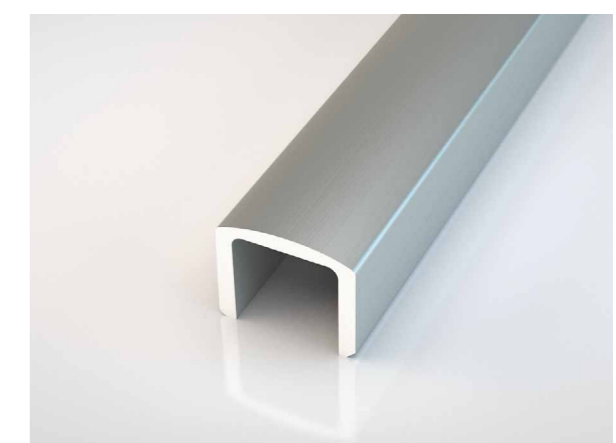
Colours

Satin Silver / Satin Gold

Order codes

SPS-2.1 (Satin Silver, 2100mm)

SPG-2.1 (Satin Gold, 2100mm)



Dimensions



G2G SIDE SEAL

REDDIPLEX



Application

Edges of glass doors

Fixing

Self-adhesive

Material

PETG

Length (mm)

3000

Glass thickness (mm)

10-12.8

Maximum gap coverage (mm)

3.5-8 (for retrofit applications)

Colour

Transparent

Order codes

10849 - 10x10mm

10970 - 10x12mm



Dimensions



G2G TOP & BOTTOM SEAL

REDDIPLEX



Application

Edges of glass doors

Fixing

Self-adhesive

Material

PETG

Length (mm)

3000

Glass thickness (mm)

10-12.8

Maximum gap coverage (mm)

12

Colour

Transparent

Order code

10936



Dimensions



FP600 FOR GLASS DOORS

ATHMER



Application

Surface mounted to the hinge gap side of glass doorsets

Fixing

Clip-on CLICK system

Performance

Flame retardant fabric

Awarded German safety mark, certified to EN 16654

Easy to fit, tamper proof CLICK system

Elegantly shaped cover caps

Ram protection available - deflection shield sold separately

200,000 cycles

260mm maximum extension

Material

Aluminium, Synthetic fabric

Length (mm)

1925

Colours

Satin Silver (RAL colour available), Black fabric



Order code

For more information visit norseal.co.uk

PORTI®

ATHMER



Application

Timber and metal framed, glass doors

Fixing

Screw-fixed

Performance

Suitable for retrofitting

Max opening angle 120 degrees

Endurance tested - DIN EN 13126-5: Class 4

Maximum door leaf weight up to 50kg

Suitable for doors made of 8, 10 & 12mm glass

Suitable with laminated glass, not recommended with frosted glass

Material

Aluminium body, Stainless Steel arm

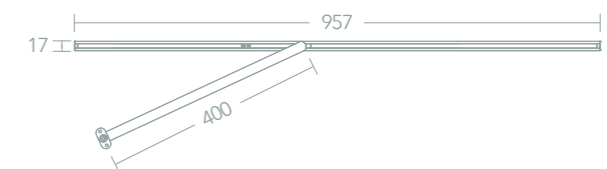
Door Leaf Width 709 - 959 mm

Frame / Weight of Door Leaf / Order Code

Timber / 50KG / 5487

Metal Frame* / 50KG / 5318

*Retrofitting only suitable on these models.



10. WEATHER SEALS

Suitable for timber and uPVC doors and windows, weather seals are water resistant and impervious to paint and stain.

Providing protection against wind, water and noise, they reduce draughts, prevent dirt and dust while also maintaining thermal efficiency and acoustic performance. There is a range of seals tested to BS 7412 and BS 644 compliant.

Contents

Echelon Weather Seals	94-95
Aquamac Weather Seals	96
Weather Seals	97-102
Brush Seals	103



ECHELON WEATHER SEALS

NORSEAL



625



Application

Rebates in timber and composite windows and doors

Recommended gap (mm)

5-7.5

Fixing

Kerf-fit

Performance

Material tested to BS 7412

Material

Flexible and rigid TPE, Closed-cell microcellular foam

Lengths

300m coil; 10m increments

Colours

White (**WHT**) / Brown (**BRN**)

Order codes

ECH625/ + Colour -300
eg. **ECH625/WHT-300**
(White, 300m coil)

ECH625/ + Colour /CL
eg. **ECH625/WHT/CL**
(White, 10m increments)



628



Application

Rebates in timber and composite doors

Recommended gap (mm)

8-13

Fixing

Kerf-fit

Performance

Material tested to BS 7412

Material

Flexible and rigid TPE, Closed-cell microcellular foam

Lengths

150m coil; 10m increments

Colours

White (**WHT**) / Brown (**BRN**)

Order codes

ECH628/ + Colour -150
eg. **ECH628/WHT-150**
(White, 150m coil)

ECH628/ + Colour /CL
eg. **ECH628/WHT/CL**
(White, 10m increments)



634



Application

Rebates in timber and composite windows and doors

Recommended gap (mm)

5-8

Fixing

Kerf-fit

Performance

Material tested to BS 7412

Material

Flexible and rigid TPE, Closed-cell microcellular foam

Lengths

150m coil; 10m increments

Colours

White (**WHT**) / Brown (**BRN**)

Order codes

ECH634/ + Colour -150
eg. **ECH634/WHT-150**
(White, 150m coil)

ECH634/ + Colour /CL
eg. **ECH634/WHT/CL**
(White, 10m increments)



640



Application

Rebates in timber and composite doors

Recommended gap (mm)

2-3

Fixing

Kerf-fit

Performance

Material tested to BS 7412

Material

Flexible and rigid TPE, Closed-cell microcellular foam

Lengths

400m coil; 10m increments

Colours

White (**WHT**) / Brown (**BRN**)

Order codes

ECH640/ + Colour -400
eg. **ECH640/WHT-400**
(White, 400m coil)

ECH640/ + Colour /CL
eg. **ECH640/WHT/CL**
(White, 10m increments)



641



Application

Rebates in timber and composite windows

Recommended gap (mm)

3.5-5.5

Fixing

Kerf-fit

Performance

Material tested to BS 7412

Material

Flexible and rigid TPE, Closed-cell microcellular foam

Lengths

300m coil; 10m increments

Colours

White (**WHT**) / Brown (**BRN**)

Order codes

ECH641/ + Colour -300
eg. **ECH641/WHT-300**
(White, 300m coil)

ECH641/ + Colour /CL
eg. **ECH641/WHT/CL**
(White, 10m increments)



642



Application

Rebates in timber and composite windows

Recommended gap (mm)

3.4-5.7

Fixing

Kerf-fit

Performance

Material tested to BS 7412

Material

Flexible and rigid TPE, Closed-cell microcellular foam

Lengths

300m coil; 10m increments

Colours

White (**WHT**) / Brown (**BRN**)

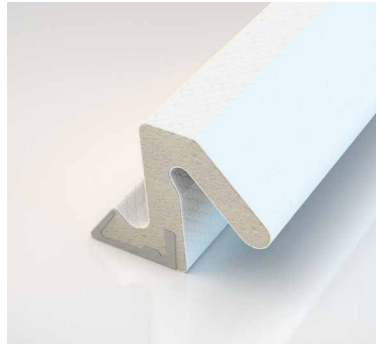
Order codes

ECH642/ + Colour -300
eg. **ECH642/WHT-300**
(White, 300m coil)

ECH642/ + Colour /CL
eg. **ECH642/WHT/CL**
(White, 10m increments)

AQUAMAC WEATHER SEALS

SCHLEGEL



21

**Application**

Weather barrier which improves energy efficiency. Impervious to paint and stain with excellent shape memory. Unaffected by rot, mould or mildew

Recommended gap (mm)

5-7.5

Fixing

Kerf-fit

Performance

Lifetime guaranteed by manufacturer. BS 644 compliant

Material

Rigid-backed foam

Lengths

250m coil; 10m increments

ColoursWhite (**WHT**) / Brown (**BRN**)**Order codes****AQU21/ + Colour -250**eg. **AQU21/WHT-250**

(White, 250m coil)

AQU21/ + Colour /CLeg. **AQU21/WHT/CL**

(White, 10m increments)



63

**Application**

Weather barrier which improves energy efficiency. Impervious to paint and stain with excellent shape memory. Unaffected by rot, mould or mildew

Recommended gap (mm)

3.4-5.4

Fixing

Kerf-fit

Performance

Lifetime guaranteed by manufacturer. BS 644 compliant

Material

Rigid-backed foam

Lengths

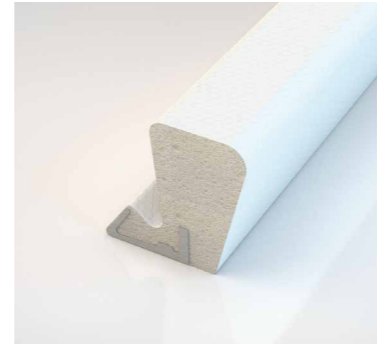
300m coil; 10m increments

ColoursWhite (**WHT**) / Brown (**BRN**)**Order codes****AQU63/ + Colour -300**eg. **AQU63/WHT-300**

(White, 300m coil)

AQU63/ + Colour /CLeg. **AQU63/WHT/CL**

(White, 10m increments)



109

**Application**

Weather barrier which improves energy efficiency. Impervious to paint and stain with excellent shape memory. Unaffected by rot, mould or mildew

Recommended gap (mm)

3.5-5.5

Fixing

Kerf-fit

Performance

Lifetime guaranteed by manufacturer. BS 644 compliant

Material

Rigid-backed foam

Lengths

250m coil; 10m increments

ColoursWhite (**WHT**) / Brown (**BRN**)**Order codes****AQU109/ + Colour -250**eg. **AQU109/WHT-250**

(White, 250m coil)

AQU109/ + Colour /CLeg. **AQU109/WHT/CL**

(White, 10m increments)

WEATHER SEALS

NORSEAL



BUB6

**Application**

Rebates in timber and composite doors and windows

Recommended gap (mm)

3-4

Fixing

Kerf-fit

Material

Flexible and rigid TPE

Length

200m coil

ColoursWhite (**WHT**) / Brown (**BRN**) / Black (**BLK**)**Order codes****BUB6 + Colour -200**eg. **BUB6WHT-200**

(White, 200m coil)



E-STRIP

**Application**

Timber door and window frames

Recommended gap (mm)

2-3

Fixing

Self-adhesive

Performance

Excellent for retrofitting to casement windows without the need for routing
Can be used to seal the top and bottom of a sash window
Can be used in doorsets
UV and Ozone stable
Very good ageing properties

Material

Closed Cell EPDM

Length

125m coil; 25m increments

ColoursWhite (**WHT**) / Black (**BLK**)**Order codes****E100 + Colour + -Length**eg. **E100WHT-125**

(White, 125m coil)



P-STRIP

**Application**

Timber door and window frames

Recommended gap (mm)

2-4

Fixing

Self-adhesive

Performance

Excellent for retrofitting to casement windows without the need for routing
Can be used to seal the top and bottom of a sash window
Can be used in doorsets
UV and Ozone stable
Very good ageing properties

Material

Closed Cell EPDM

Length

100m coil; 10m increments

ColoursWhite (**WHT**) / Brown (**BRN**)**Order codes****P100 + Colour + -Length**eg. **P100WHT-100**

(White, 100m coil)

WEATHERBAR

NORSEAL



Application

Rebates in timber and composite door sills

Recommended gap (mm)

1.5-4

Fixing

Kerf-fit

Lengths (mm)

1000, 2400

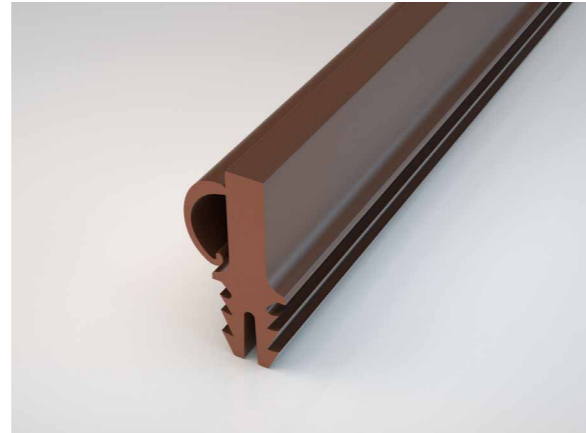
Colour

Brown

Order codes

WBF-1B (1000mm)

WBF-2.4B (2400mm)



Dimensions



DELUGE

SEALMASTER



Application

Rebates in timber doors and windows

Recommended gap (mm)

000 - 4-5 / 001 - 7-9 / 002 - 2-4 / 003 - 5-7 /

004 - 6-8 / 039 - 8-10 / 045 - 10-16

Fixing

Pinned every 200mm

Material

Aluminium, Neoprene gasket

Lengths (mm)

1000, 1500, 2100

Colour

Mill finish, Black gasket

Order codes

Holder + Colour + /Seal style + -Length

eg. SEM/000-1.5 (SE, Mill finish, 000, 1500mm)



Dimensions



CYCLONE

SEALMASTER



TD / TE

Application

Timber and composite door sills

Fixing

Bedded in silicone and screw-fixed

Material

Aluminium, Neoprene gasket

Lengths (mm)

1000, 1500, 2100

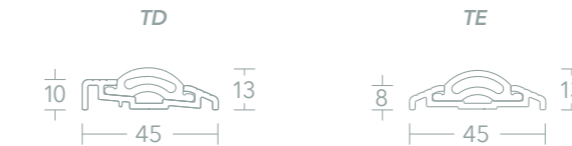
Colours

Satin Silver (S) / Satin Gold (G)

Order codes

Holder + Colour + -Length eg. TDS-1 (TD, Silver, 1000mm)

Dimensions (holder style)



CB / CC / CD

Application

Bottom edge of timber and composite doors

Fixing

Screw-fixed

Material

Aluminium

Lengths (mm)

1000, 1500, 2100

Colours

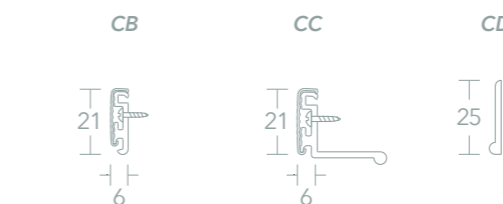
Satin Silver (S) / Satin Gold (G)

Order codes

Holder + Colour + -Length

eg. CBS-1 (CB, Silver, 1000mm)

Dimensions (holder style)



WD / WE / WF

Application

Bottom edge of timber and composite doors

Fixing

Screw-fixed

Material

Aluminium, Neoprene gasket, Timber (WE/WF)

Length (mm)

1000

Colours

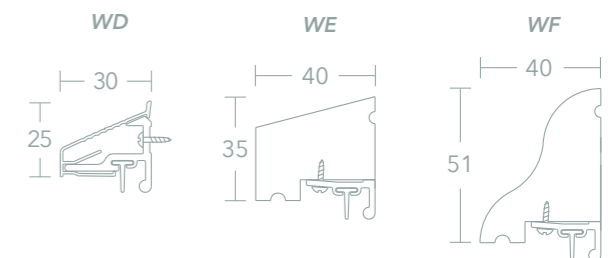
Hardwood (H) / Redwood (H) / Softwood (W) / Satin Silver (S) (WD Only)

Order codes

Holder + Colour + -Length

eg. WDH-1 (WD, Hardwood, 1000mm)

Dimensions (holder style)



SMARTSEAL

SEALMASTER

**TA / TB****Application**

Timber and composite door sills

Fixing

Bedded in silicone and screw-fixed

Material

Aluminium

Lengths (mm)

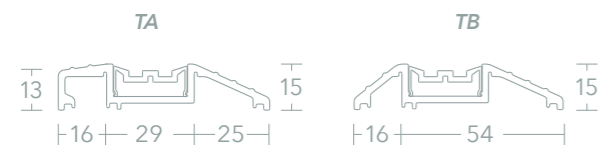
1000, 1500, 2100

Colours

Satin Silver (S) / Satin Gold (G)

Order codes**Holder + Colour + -Length**

eg. TAS-1 (TA, Silver, 1000mm)

Dimensions (holder style)**CA / WA****Application**

Bottom edge of timber and composite doors

Fixing

Screw-fixed

Material

Aluminium, Neoprene gasket

Lengths (mm)

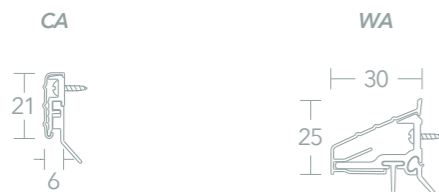
1000, 1500, 2100

Colours

Satin Silver (S) / Satin Gold (G)

Order codes**Holder + Colour + -Length**

eg. CAS-1 (CA, Silver, 1000mm)

Dimensions (holder style)**WB / WC****Application**

Bottom edge of timber and composite doors

Fixing

Screw-fixed

Material

Timber, Aluminium, Neoprene gasket

Lengths (mm)

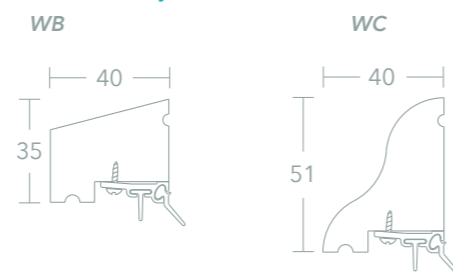
1000, 1500

Colours

Hardwood (H) / Redwood (R) / Softwood (W)

Order codes**Holder + Colour + -Length**

eg. WBH-1 (WB, Hardwood, 1000mm)

Dimensions (holder style)**THUNDER**

SEALMASTER

**TL / TM / TN****Application**

Timber and composite door sills

Fixing

Bedded in silicone and screw-fixed

Material

Aluminium

Lengths (mm)

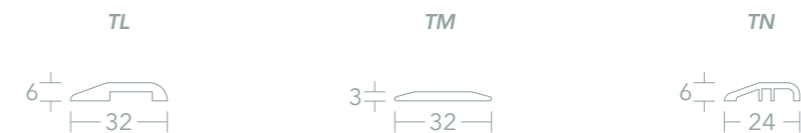
1000, 1500, 2100

Colours

Satin Silver (S) / Satin Gold (G)

Order codes**Holder + Colour + -Length**

eg. TLS-2.1 (TL, Silver, 2100mm)

Dimensions (holder style)**WG / WH****Application**

Bottom edge of timber and composite doors

Fixing

Screw-fixed

Material

Timber, Aluminium, Neoprene gasket

Lengths (mm)

1000, 1500

Colours

Satin Silver (S) / Satin Gold (G)

Order codes**Holder + Colour + -Length**

eg. CAS-2.1 (CA, Silver, 2100mm)

Dimensions (holder style)

WATERSHED

SEALMASTER

**TH / TJ / TK****Application**

Timber and composite door sills

Fixing

Bedded in silicone and screw-fixed

Material

Aluminium

Lengths (mm)

1000, 1500, 2100

Colours

Satin Silver (S) / Satin Gold (G)

Order codes**Holder + Colour + -Length**

eg. THS-1 (TH, Silver, 1000mm)

Dimensions (holder style)**CA / WA****Application**

Bottom edge of timber and composite doors

Fixing

Screw-fixed

Material

Aluminium, Neoprene gasket

Lengths (mm)

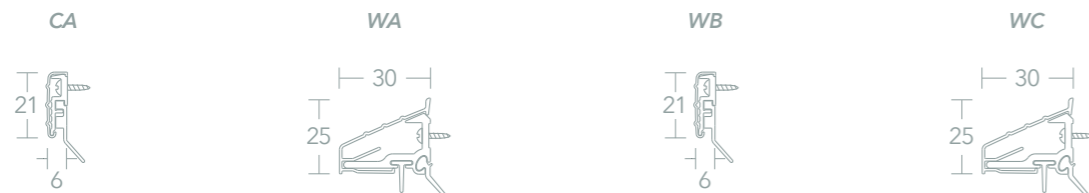
1000, 1500, 2100

Colours

Satin Silver (S) / Satin Gold (G)

Order codes**Holder + Colour + -Length**

eg. CAS-1 (CA, Silver, 1000mm)

Dimensions (holder style)**ALUBROS / FA / FE**

ATHMER

**ALUBROS****Application**

Bottom edge of timber, metal and composite doors

Fixing

Screw-fixed

Material

Aluminium carrier with nylon brush

Brush length (mm) BL

15, 20, 25, 40, 60

Lengths (mm)

1000, 1100, 1250, 2000

Up to 2700

Colour

Satin Silver (S)

Order codes**4-121 + -Brush Length + -Length**

eg. 4-121-015-1000

(15mm brush, 1000mm length)

**FA****Application**

Bottom edge of timber, metal and composite doors

Fixing

Screw-fixed

Material

Galvanised steel carrier with horsehair brush

Brush length (mm) BL

15, 20, 25, 40, 60

Lengths (mm)

1000, 1100, 1250, 2000

Up to 2700

Colour

Satin Silver (S)

Order codes**4-310 + -Brush Length + -Length**

eg. 4-310-025-1000

(25mm brush, 1000mm length)

**FE****Application**

Bottom edge of timber, metal and composite doors

Fixing

Kerf-fixed

Material

Galvanised steel carrier with nylon brush

Brush length (mm) BL

15, 20, 40, 60

Lengths (mm)

1000, 1100, 1250, 2000

Up to 2700

Colour

Satin Silver (S)

Order codes**4-336 + -Brush Length + -Length**

eg. 4-336-020-1250

(20mm brush, 1250mm length)

11. FINGER PROTECTION

Finger protection products assist in preventing thousands of accidents that happen from trapped fingers in doors. It is estimated that in the UK each year 30,000 children trap or seriously injure their fingers with 1,500 requiring surgery.

Applications are typically child-friendly environments such as school, nurseries, libraries and hospitals and there is also increasing use in restaurants, pubs and fast-food outlets.

The finger protection range offer both surface mounted and fully integrated solutions in a variety of colour options.

Contents

Finger Protection Full Sets	106
Knuckle Side Protectors	107
Gap Covers	108-111



FINGER WIZARD FULL SET

NORSEAL

Application

Surface mounted to the hinge side of timber doorsets

Fixing

Self-adhesive or pinned

Performance

Door opening up to 120 degrees
UL94 - Class V1, suitable for use on fire rated doors
100,000 cycles

Material

PVC

Length (mm)

1950

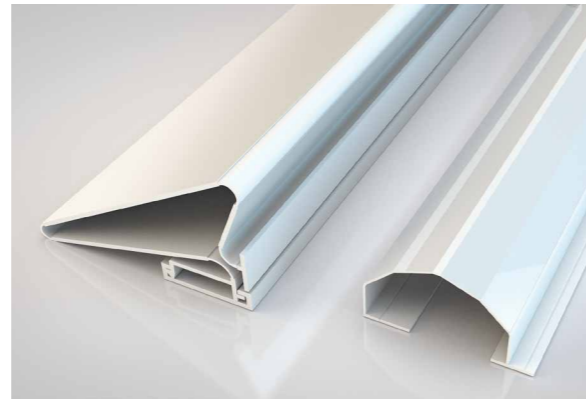
Colours

Black (**BK**) / Brown (**B**) / White (**W**)

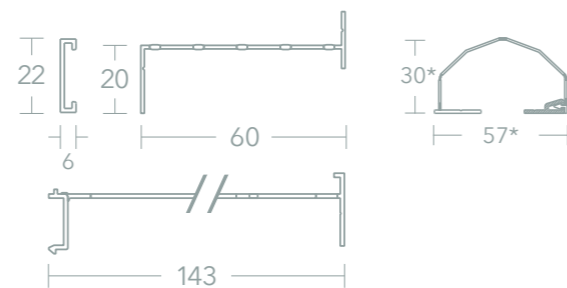
Order codes

FW-FS/ + Colour eg. **FW-FS/BK** (Black)

*Dimensions are approximates due to flexible material.



Dimensions



NOR200 FULL SET

NORSEAL

Application

Surface mounted to the hinge side of timber doorsets

Fixing

Self-adhesive or pinned

Performance

Door opening up to 180 degrees
SKG certified to EN 16654 & NEN 8654
250,000 cycles

Material

PVC

Length (mm)

1950

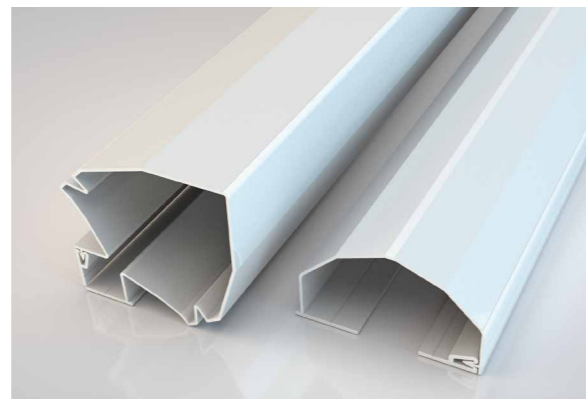
Colours

White (**WHT**) / Grey (**GRY**)

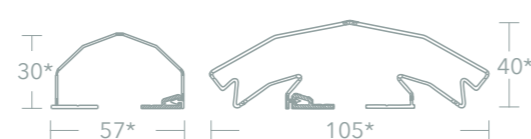
Order codes

NOR200/FS/ + Colour eg. **NOR200/FS/GRY** (Grey)

*Dimensions are approximates due to flexible material.



Dimensions



FINGER WIZARD - KNUCKLE

NORSEAL

Application

Surface mounted to the hinge pin side of timber doorsets

Fixing

Self-adhesive or pinned

Performance

Door opening up to 120 degrees
UL94 - Class V1, suitable for use on fire rated doors
100,000 cycles

Material

PVC

Length (mm)

1950

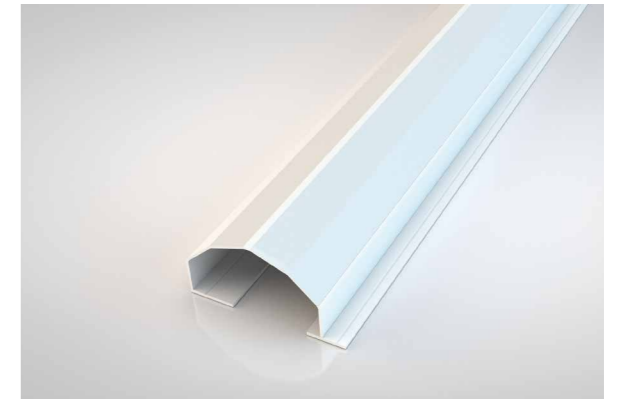
Colours

Black (**BK**) / Brown (**B**) / White (**W**)

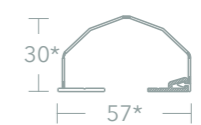
Order codes

FW-K/ + Colour eg. **FW-K/BK** (Black)

*Dimensions are approximates due to flexible material.



Dimensions



LAS9050

LORIENT

Application

Surface mounted to the hinge pin side of timber doorsets

Fixing

Screw-fixed

Performance

Door opening up to 110 degrees
Tested to BS 8613
Compliant with EN 16654 & BS 8613
SKG certified
250,000 cycles

Material

Aluminium, Silicone gasket

Length (mm)

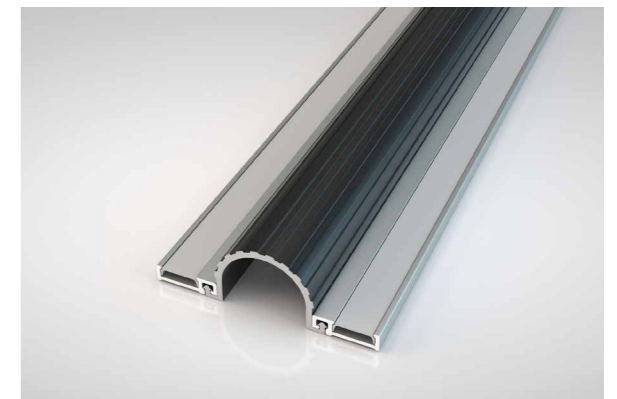
2100

Colours

Satin Silver, gasket - Black (**BLK**) / Brown (**BRN**) / Cream (**CRM**) / Grey (**GRY**)

Order codes

LAS9050/2100/ + Colour eg. **LAS9050/2100/BLK** (Black)



Dimensions



FINGER WIZARD - GAP COVER

NORSEAL

Application

Surface mounted to the hinge gap side of timber doorsets

Fixing

Self-adhesive or pinned

Performance

Door opening up to 120 degrees
UL94 - Class V1, suitable for use on fire rated doors
100,000 cycles

Material

PVC

Length (mm)

1950

Colours

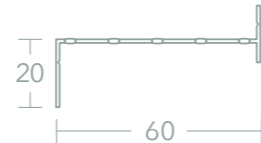
Black (**BK**) / Brown (**B**) / White (**W**)

Order codes

FW-SS/ + Colour eg. **FW-SS/BK** (Black)



Dimensions



NOR200

NORSEAL

Application

Surface mounted to the hinge gap side of timber doorsets. Use one either side of the door for pivoted and double swing applications

Fixing

Self-adhesive or pinned

Performance

Door opening up to 180 degrees
SKG certified to EN 16654 & NEN 8654
250,000 cycles

Material

PVC

Length (mm)

1950

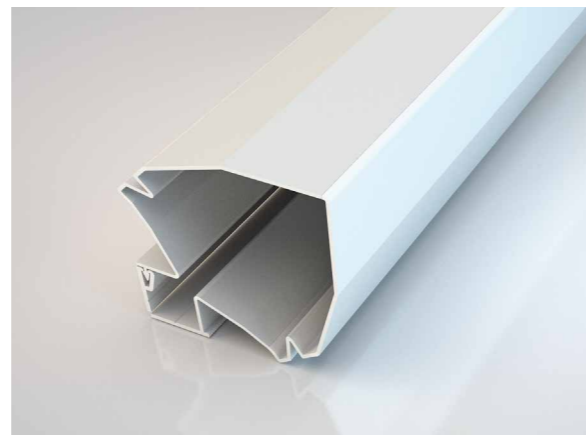
Colours

White (**WHT**) / Grey (**GRY**)

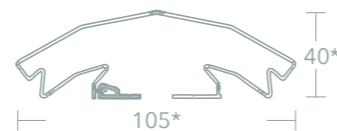
Order codes

NOR200/SS/ + Colour eg. **NOR200/SS/GRY** (Grey)

*Dimensions are approximates due to flexible material.



Dimensions



NOR250

NORSEAL

Application

Surface mounted to the hinge gap side of timber doorsets

Fixing

Screw-fixed

Performance

Door opening up to 100 degrees
Solid aluminium construction suitable for high traffic environments

Material

Aluminium

Length (mm)

1800

Colour

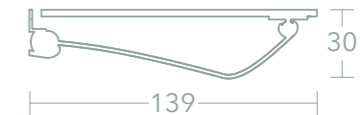
Satin silver

Order code

NOR250/SAA



Dimensions



NOR300

NORSEAL

Application

Integrated into the hinge side of timber doorsets

Fixing

Screw-fixed

Performance

Designed to distribute door weight uniformly
Non-vision
UL approval
Durability tested to ANSI/BHMA A156.26

Material

Aluminium

Length (mm)

2100

Colour

Silver

Order code

NOR300



Dimensions



FP100

ATHMER

Application

Surface mounted to the hinge pin side of timber doorsets

Fixing

Screw-fixed, Self-adhesive

Performance

No moving parts
Retrofit possible - supplied with self-adhesive tape and pre-drilled, countersunk holes to assist with fitting
Suitable for standard 13mm diameter hinges, different diameters also available
Designed to match door aesthetic

Material

Aluminium

Length (mm)

1800

Colour

Satin Silver

Order code

FP100/SAA-1800

**Dimensions****FP200 / FP800**

ATHMER

Application

Surface mounted to the hinge gap side of timber doorsets

Fixing

Screw-fixed

Performance

Flame retardant fabric
Awarded German safety mark, certified to EN 16654
Tested to BS 8613 - Class 2
1,000,000 cycles
260mm maximum extension

Material

Aluminium, Synthetic fabric

Length (mm)

1925

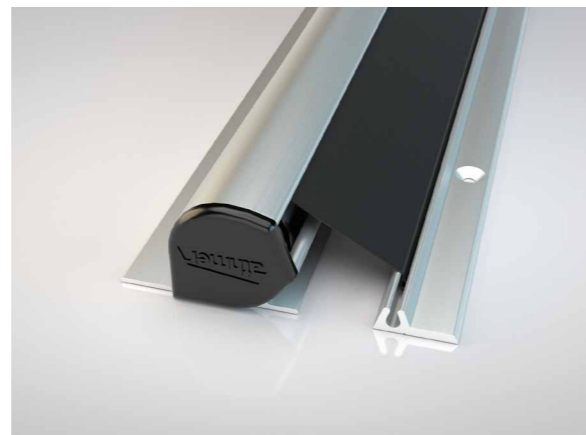
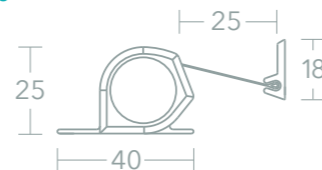
Colour

Satin Silver (RAL colour available), Black fabric

Order codes

FP200BK/SAA-1925

FP800SAA/GRY-1925 - suitable for external applications - weatherproof, resistant to rain, snow, frost, dirt and UV light. Concealed fixings.

**Dimensions****FP600**

ATHMER

Application

Surface mounted to the hinge gap side of timber and metal doorsets

Fixing

Clip-on CLICK system

Performance

Flame retardant fabric
Awarded German safety mark, certified to EN 16654
Easy to fit, tamper proof CLICK system
Elegantly shaped cover caps
Ram protection available - deflection shield sold separately
200,000 cycles
260mm maximum extension

Material

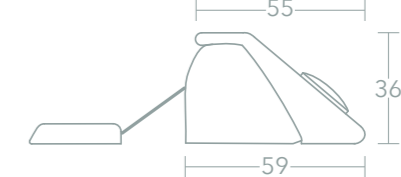
Aluminium, Synthetic fabric

Length (mm)

1925

Colours

Satin Silver (RAL colour available), Black fabric

**Dimensions****Order code**

FP600BK/SAA-1925

LAS9070

LORIENT

Application

Surface mounted to the hinge gap side of timber doorsets

Fixing

Screw-fixed

Performance

Door opening up to 180 degrees
Tested to BS 8613 - Class 1

Material

Aluminium, Silicone gasket

Length (mm)

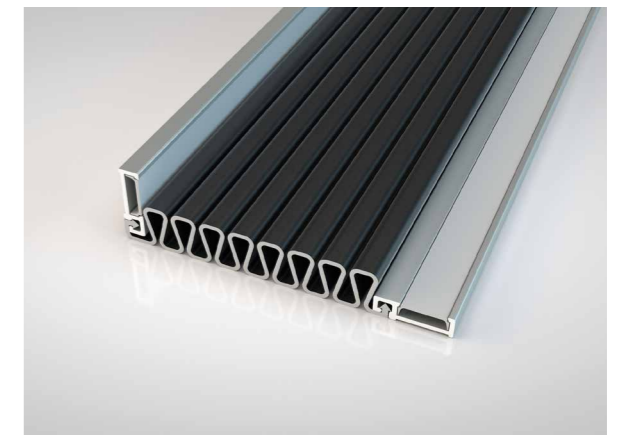
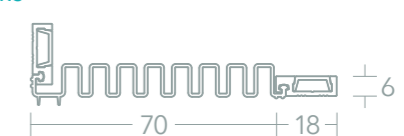
2100

Colours

Satin Silver, gasket - Black (**BLK**) / Brown (**BRN**) / Cream (**CRM**) / Grey (**GRY**)

Order codes

LAS9070/2100/ + Colour eg. LAS9070/2100/BLK (Black)

**Dimensions**

INDEX

PRODUCT NAME	BRAND	PRODUCT NAME	BRAND
A		Graphite Lock Kits	Norseal 41
Advantage	Norseal	I	
Advantage Plus	Norseal	IF30	Sealmaster 16
Alubros	Athmer	IF60	Sealmaster 16
Aquamac Weather Seals	Schlegel	IMN/IMP Combined	Sealmaster 17
B		Intumescent Foam Glazing	
Black Glazing Tape	Sealmaster	Tape	Sealmaster 25
Blizzard	Sealmaster	Interdens	Basf Wolman 26
BUB6	Norseal	Interdens Hinge Pads	Norseal 40
C		Interdens Lock Kits	Norseal 41
Closed Cell Foam Tape	Norseal	Intumescent Air Transfer	
Corner Seal	Norseal	Grilles	Norseal/Pyroplex 36
Cover Plate	Norseal/Pyroplex	Intumescent Sheets	Norseal 41
Cyclone	Sealmaster	K	
D		Kerafix 2000	Rolf Kuhn 26
Deluge	Sealmaster	L	
DS	LORIENT	LAS1011	LORIENT 57
E		LAS1206	LORIENT 56
E-Strip	Norseal	LAS1212	LORIENT 56
Echelon weather seals	Norseal	LAS9050	LORIENT 107
F		LAS9070	LORIENT 111
FA	Athmer	Liner N	Norseal 30
FE	Athmer	LX Liner	LORIENT 33
Finesse	LORIENT	M	
Finger Wizard Full Set	Norseal	M-12 Universal Glass	Athmer 87
Finger Wizard Gap Cover	Norseal	M-12 Universal Timber	Athmer 77
Finger Wizard Knuckle	Norseal	Magnet Accessory	Athmer 78
Firecheck Door Viewers	UAP	N	
Fire Rated Door Viewers	Norseal	N30	Sealmaster 9
Fire Seal	LORIENT	N60	Sealmaster 9
Fireglaze Compound	Sealmaster	N60S/IMP Combined	Sealmaster 17
Fireglaze Tape	Sealmaster	NOR200	Norseal 108
Firestrip 30	Hodgson Sealants	NOR200 Full Set	Norseal 106
Firestrip 60	Hodgson Sealants	NOR250	Norseal 109
Flexible	Pyroplex	NOR300	Norseal 109
Flexible Figure 1	LORIENT	NOR400	Norseal 45
FP100	Athmer	NOR400 Edge	Norseal 45
FP200	Athmer	NOR400 Shield	Norseal 48
FP600	Athmer	NOR510	Norsound By Norseal 58
FP600 for Glass	Athmer	NOR615	Norsound By Norseal 72
FP800	Athmer	NOR620	Norsound By Norseal 72
G		NOR625	Norsound By Norseal 72
G2G Side Seal	Reddiplex	NOR630	Norsound By Norseal 72
G2G Top & Bottom Seal	Reddiplex	NOR650	Norsound By Norseal 73
GL 60	Sealmaster	NOR695	Norsound By Norseal 73
Glasdicht UB	Athmer	NOR710	Norsound By Norseal 52
Graphite Hinge Pads	Norseal	NOR710FR	Norsound By Norseal 52
		NOR710SR	Norsound By Norseal 52
		NOR710STOP	Norsound By Norseal 53

INDEX

PRODUCT NAME	BRAND	PRODUCT NAME	BRAND
NOR720	Norsound By Norseal	Smartseal	Sealmaster 100
NOR755	Norsound By Norseal	Soterian	UAP 46
NOR810	Norsound By Norseal	SS	LORIENT 11
NOR810S	Norsound By Norseal	Stadi L-24/20 OS	Athmer 68
NOR810S+	Norsound By Norseal	Stadi L-24/20 TS	Athmer 68
NOR815	Norsound By Norseal	Stadi L-24/20 WS	Athmer 68
NOR820	Norsound By Norseal	Stadi LD-24/20 WS	Athmer 67
NOR850	Norsound By Norseal	Strip	Pyroplex 14
NOR855	Norsound By Norseal	System 36 Plus	LORIENT 25
NORFAST	Norsound By Norseal	System 90+	LORIENT 29
NORL710SR	Norsound By Norseal	T	
P		Teardrop Seal	Norseal 54
P-Strip	Norseal	Tempest	Sealmaster 59
Palusol Liner	Basf Wolman	TF115 - 30054	Pyroplex 20
PFG1HR	Pyroplex	TF130 - 30049	Pyroplex 20
Porti for Glass	Athmer	Therm-A-Blade	Intumescent Seals Ltd 8
Porti for Timber	Athmer	Therm-A-Flex	Intumescent Seals Ltd 15
Postmaster Professional	Yale	Therm-A-Glaze 30	Intumescent Seals Ltd 22
Product 69	Envirograf	Therm-A-Glaze 45	Intumescent Seals Ltd 22
R		Therm-A-Glaze 60	Intumescent Seals Ltd 28
Rainstop L24/20 WS	Athmer	Therm-A-Line	Intumescent Seals Ltd 31
Rigid Box	Pyroplex	Therm-A-Seal	Intumescent Seals Ltd 15
Rigid Box - Offset Flipper	Pyroplex	Therm-A-Sol	Intumescent Seals Ltd 32
Rigid Box - Pile	Pyroplex	Therm-A-Stop	Intumescent Seals Ltd 8
Rigid Box - Single Flipper	Pyroplex	Therm-A-Strip	Intumescent Seals Ltd 22
Rigid Box - Triple Flipper	Pyroplex	Thunder	Sealmaster 101
Rigid Box - Twin Flipper	Pyroplex	TK-15/BXL Flush Bolt	Athmer 69
S		TK-15/T Flush Bolt	Athmer 69
Schall-Ex Duo GS-10	Athmer	TS	LORIENT 11
Schall-Ex Duo GS-8	Athmer	TT Series	Sealmaster 58
Schall-Ex Duo GS-H10	Athmer	Typhoon	Sealmaster 59
Schall-Ex Duo GS-H20	Athmer	Typhoon Glass	Sealmaster 89
Schall-Ex Duo GS-H8	Athmer	U	
Schall-Ex Duo L-15 WS	Athmer	UCH30 - 8193	Pyroplex 20
Schall-Ex GS-10	Athmer	Ultima 60	Sealmaster 10
Schall-Ex GS-8	Athmer	Universal	Norseal 28
Schall-Ex GS-A	Athmer	V	
Schall-Ex GS-H10	Athmer	VHH Slide M-12	Athmer 76
Schall-Ex GS-H20	Athmer	Vision	Norseal 23
Schall-Ex GS-H8	Athmer	VN Slide - 8/10	Athmer 87
Schall-Ex GS-H8/12	Athmer	W	
Schall-Ex L-15 FS	Athmer	Watershed	Sealmaster 102
Schall-Ex L-15/30 OS	Athmer	Weatherbar	Norseal 98
Schall-Ex L-15/30 WS	Athmer	Z	
Schall-Ex L-15/30 WS Pivot	Athmer	ZD Slide-12/12	Athmer 79
Schall-Ex Slide Applic A	Athmer	8492 Glazing Strip	Pyroplex 21
Schall-Ex Slide GS	Athmer		
Schall-Ex Slide GS-H	Athmer		
Schall-Ex Slide M-12 WS	Athmer		
Security Cowl	Norseal		

GLOSSARY OF TERMS

Aperture

An opening created by a cut-out through a door leaf that is to receive glazing or other infilling.

Assessment

Application of expert knowledge to data established by a series of fire tests of a door leaf construction or particular design type to extend the scope of the results.

BM Trada

BM Trada provides third-party certification fire services for manufacturing, installation and maintenance service for fire doors.

Butt Joint

A technique in which two pieces of material are joined by simply placing their ends together without any special shaping.

Certifire

Certifire is an independent third-party certification scheme that assures performance, quality, reliability and traceability of products and systems.

dBRw

Rw is the weighted sound reduction index in dB (decibels) and it describes the airborne sound insulating power of a building element.

Door Leaf

Hinged, pivoted or sliding part of a door assembly or door set.

Doorset

Complete unit consisting of a door frame and a leaf or leaves, supplied with all essential parts from a single source.

Double Action Door

Hinged or pivoted door that can be opened in either direction.

Fanlight

The space between a frame transom rail and the frame head that is generally glazed.

Fire Resistance

Ability of a component or construction of a building to meet for a stated period of time some or all of the appropriate criteria specified in BS476 Pt.22 or BS EN 1634.

Free Area

Also referred to as free air flow. The amount of free space for air to move through the covers. It can be expressed as a square or cubic measurement or percentage of the total cover size.

Gasket

A rubber seal used to fill the gap between two surfaces preventing various forms of leakage.

Hardware

Door set / door assembly components usually in metal that are fitted to a door or frame to provide for the operation and securing of a door leaf.

Head

The top edge of a door leaf.

IFC Certificate

IFC Certification Ltd is a UKAS accredited and internationally recognised provider of high quality customer focused independent third party certification.

Intercalated Graphite

One of the three main types of intumescent materials which produces an exfoliated, fluffy material during expansion. The activation temperature is typically around 200 °C.

Intumescent Seal

Seal used to impede the flow of heat, flame or gases, which only becomes active when subjected to elevated temperature. Intumescent seals are components which expand, helping to fill gaps and voids, when subjected to heat in excess of ambient temperatures.

Jamb

The vertical side member of a door or window frame.

Kerf

A slot cut along the wooden door frame, generally the width of a standard saw blade.

Meeting Stile

The gap where two swinging doors meet.

Mitre

Two pieces forming an angle, or a joint formed between two pieces of wood by cutting bevels of equal angles at the ends of each piece.

Mortice

A recess or hole formed in one piece to receive a projection or tenon on the end of another piece.

Neoprene

A synthetic polymer resembling rubber, resistant to oil, heat, and weathering.

Operating Gap

The space between the edges of a door leaf and the door frame, floor, threshold or opposing leaf, or over panel that is necessary to enable the door leaf to be opened and closed without binding.

STANDARDS

ANSI/BHMA A156.26

Standard establishes requirements for architectural continuous hinges used in building construction. Cycle, finish, abuse, overload, vertical wear, and strength tests are included.

Approved Document E

Relates to resistance to sound. Building regulation in England for the resistance to the passage of sound and sound insulation.

Approved Document M

Relates to access to and use of buildings. Building regulation in England to ensure that people are able to access and use buildings and their facilities.

AS1530.7:2007

Methods for fire tests on building materials, components and structures. Part 7 - Smoke control assemblies - ambient and medium temperature leakage test procedure.

BS 2911:1974

Specification for letter plates. This has been superseded then replaced with: BS EN 13724:2013 Postal services. Apertures of private letter boxes and letter plates. Requirements and test methods.

BS 476-20:1987

Fire tests on building materials and structures. Method for determination of the fire resistance of elements of construction (general principles).

BS 476-22:1987

Methods for determination of the fire resistance of non-load-bearing elements of construction.

BS 476-23:1987

Fire tests on building materials and structures. Methods for determination of the contribution of components to the fire resistance of a structure.

BS 476-31.1:1983

Methods for measuring smoke penetration through doorsets and shutter assemblies.

BS 5368-3:1978

Methods of testing windows. Wind resistance tests.

BS 644:2012

Methods of testing timber windows and doorsets. Fully finished factory-assembled windows and doorsets of various types.

BS 7412:2007

Specification for windows and doorsets made from unplasticised polyvinyl chloride (PVC-U) extruded hollow profiles.

Pa

A unit of pressure. The pressure exerted on an area of 1 square metre by a force of 1 newton.

PETG (Polyethylene Terephthalate Glycol)

A thermoplastic polymer created through the copolymerisation of PET and ethylene glycol.

PU Foam (Polyurethane Foam)

A plastic material used especially to make paint or substances which prevent water or heat from passing through.

PVC (Polyvinyl Chloride)

A thermoplastic material used for many purposes, available in rigid and flexible form.

Rebate

An edge that has been cut to form a step, usually as part of a joint.

Side Screen

A lateral extension of a door glazed to provide light or vision that may be a separate component using separate jambs or form part of a door frame using mullions.

Single Action Door

Hinged or pivoted door that can be opened in one direction only.

SKG

Partner for safeguarding the long-term performance of safety of industrial products for the building sector.

Sodium Silicate

One of the three main types of intumescent materials which gives a uniaxial expansion and hard foam which exerts considerable pressure activating at around 110 - 120 °C.

Test Evidence / Primary Test Evidence

Evidence of the performance of a fire door that is derived from a full scale fire test on that particular product design by the test sponsor.

TPE (Thermoplastic Elastomer)

A polymer blend or compound which, above its melt temperature, exhibits a thermoplastic character that enables it to be shaped into a fabricated article and which, within its design temperature range, possesses elastomeric behaviour without cross-linking during fabrication. This process is reversible and the products can be reprocessed and remoulded.

Vision Panel

A panel of transparent or translucent material fitted into a door leaf to provide a degree of visibility from one side of a door leaf to the other.

STANDARDS

BS 8214:2016

Timber based fire door assemblies code of practice. Recommendations for the specification, installation and maintenance of timber based fire doors.

BS 8613:2017

Specifications for finger protection devices for pedestrian doors. Specification. Safety requirements and test methods.

BS EN 12208:2000

Windows and doors. Watertightness.

BS EN 12210:2016

Windows and doors. Resistance to wind load.

BS EN 1363-1:2012

Fire resistance tests. General requirements.

BS EN 1364-1:2015

Fire resistance tests for non-load-bearing elements. Walls.

BS EN 1634-1:2014 + A1:2018

Fire resistance and smoke control tests for door and shutter assemblies, openable windows, and elements of building hardware. Fire resistance test for door and shutter assemblies, and openable windows.

BS EN 1634-3:2004

Fire resistance and smoke control tests for door and shutter assemblies, openable windows, and elements of building hardware. Smoke control test for door and shutter assemblies.

BS EN 16654:2015

Child protective products. Consumer fitted finger protection devices for doors. Safety requirements and test methods.

BS EN 1670:2007

Building hardware. Corrosion resistance. Requirements and test methods.

BS EN ISO 10140-2:2010

Acoustics. Laboratory measurement of sound insulation of building elements. Measurement of airborne sound insulation.

BS EN ISO 717-1:2013

Acoustics. Rating of sound insulation in buildings and of building elements.

Building Bulletin 93: Acoustic design of schools - performance standards

Explains minimum performance standards for the acoustics of school buildings.

NEN 8654:2016

Finger protection profiles for hinged interior doors for intensive use. Safety requirements and test methods.

PAS 24:2016

Enhanced security performance requirements for doorsets and windows in the UK. Doorsets and windows intended to offer a level of security suitable for dwellings and other buildings exposed to comparable risk.

TS008:2015

Enhanced security and general requirements for letter plate assemblies and slide through boxes.

UL 1784

Standard for air leakage tests of door assemblies and other opening protectives.

UL 94

Standard for safety of flammability of plastic materials for parts in devices and appliances testing.



Fire
resistance



Smoke
resistance



Acoustic
resistance



Weather
resistance



Draught
resistance



ADM
compliant



Tested to
PAS 24



Tested to
30 minutes



Tested to
60 minutes



Tested to
90 minutes



Tested to
120 minutes



Tested to
240 minutes



Bespoke
Manufactured
length

Seals can be manufactured to bespoke lengths, minimum and maximum lengths can be found on relevant product pages.

All information is for guidance purposes only. Information is offered in good faith, but cannot be used in place of current test evidence.

All products may vary from rendered images.

© Norseal Ltd 2019



5 Regents Drive
Prudhoe
Northumberland
NE42 6PX



norseal.co.uk



sales@norseal.co.uk



+44 (0)1661 830088

